

**ALUMINCO®**

ALUMINIUM BUILDING SYSTEMS





# INNOVATIVE HIGH QUALITY PRODUCTS

New demands emerge. Modern construction projects demand architectural systems that uphold the highest standards of sustainability and energy efficiency.

By continuously investing in new technologies and placing great emphasis on research and development, we have developed and established hundreds of aluminum products, many of which are unique in their kind, with many innovations and patents.

Our product range is categorised into five segments:

**SKYLINE PREMIUM SYSTEMS (Minimal line)**

Doors, Windows, Façades

**ARCHITECTURAL SYSTEMS (Efficient Solutions)**

Doors, Windows, Entrance Doors, Folding, Shading, Shutters, Partitions, Curtain Walls,

**RAILING SYSTEMS**

Glass Balustrades, Classic Line, Anodized Line, Fusion Line

**OUTDOOR LIVING SYSTEMS**

Wall Cladding, Windscreens, Pergolas, Canopies, Fencing, Panels,

**PHOTOVOLTAIC MOUNTING SYSTEMS**



**SKYLINE**



**SLIDING DOORS**



**WINDOWS**



**FAÇADES**



**ENTRANCE DOORS**



**PARTITIONS**



**FOLDING**



**LOUVERS**



**GLASS BALUSTRADES**



**CLASSIC RAILINGS**



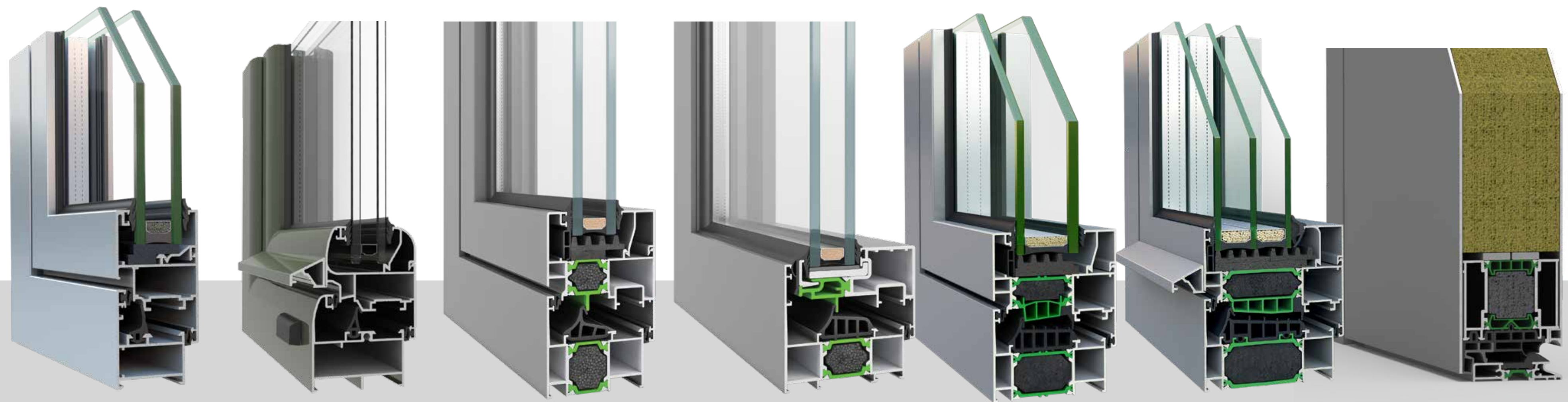
**WD CLADDING**



**PERGOLAS**



# OPENING SYSTEMS



# W400

## Tilt & Turn System

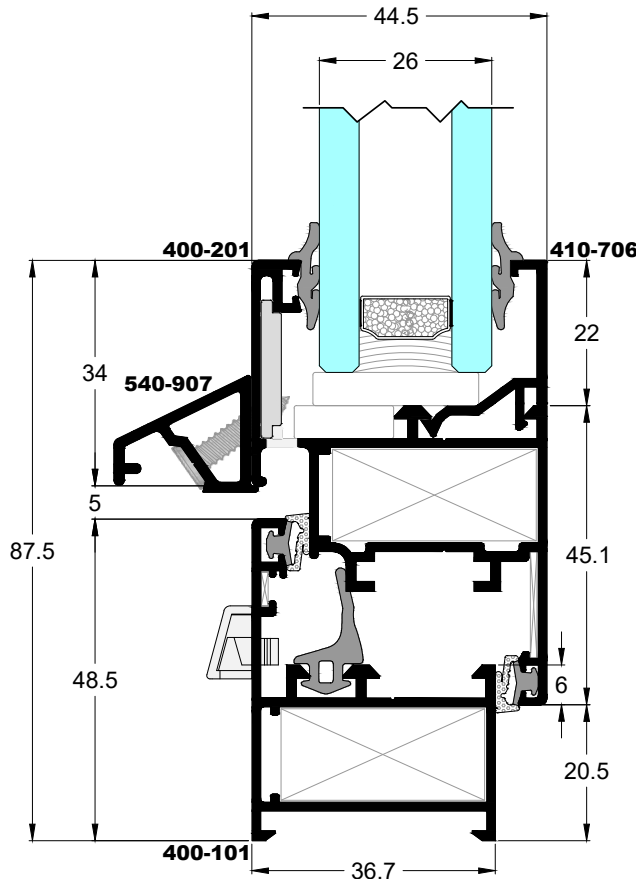
High level of flexibility.

### System Identity

The W400 system is a lightweight, versatile, non-insulated system whose main characteristics are its flexibility and the easy adaptation to a wide variety of applications. Its harmonious design from curved lines that lead to straight and flat surfaces combines traditional with modern look, offering many functional values. In cooperation with the SL205 system, “school” type windows (sliding window with opening skylight) can be created. Thanks to the solutions offered by the W400, it proves to be an extremely efficient system both for its durability and functionality.

### Features & Benefits

- Compatible with the SL205 system.
- Ideal for large-scale requirements since it offers easy and fast installation.
- Possibility for corner constructions, windows and opening - sliding frames.
- Large variety of shutters for all possible typologies.



## Technical data

### HARDWARE

CAMERA	CE
--------	----

### SYSTEM PROFILE DIMENSIONS

MIN. FRAME DEPTH mm	36.7
MIN. FACE HEIGHT mm	87.5
GLASS THICKNESS mm	4-26

### CONSTRUCTION DIMENSIONS

SASH WIDTH mm	365-1100
SASH HEIGHT mm	360-2200
MAX. SASH mm (WxH)	1100x2000 / 900x2200
MAX. SASH WEIGHT Kg	100

### CERTIFICATES/PERFORMANCES

AIR PERMEABILITY EN 12207	Class 4
WATER TIGHTNESS EN 12208	Class 3A
RESISTANCE TO WIND LOAD EN 12210	Class C3

### Configurations

**Casement windows** 1Leaf - 2Leaf - 3Leaf - 4Leaf

**Casement-awning windows** 1Leaf - 2Leaf

**Shutters** 1Leaf - 2Leaf - 3Leaf - 4Leaf

**Doors** 1Leaf - 2Leaf

**Angular structure** 30°-190° with Ø50 & 7°-205° with Ø60

**Fixed-picture windows Combinations** 2Leaf sliding SL205 with opening W400







# W540

## Tilt & Turn System

Affordable quality and compatibility.

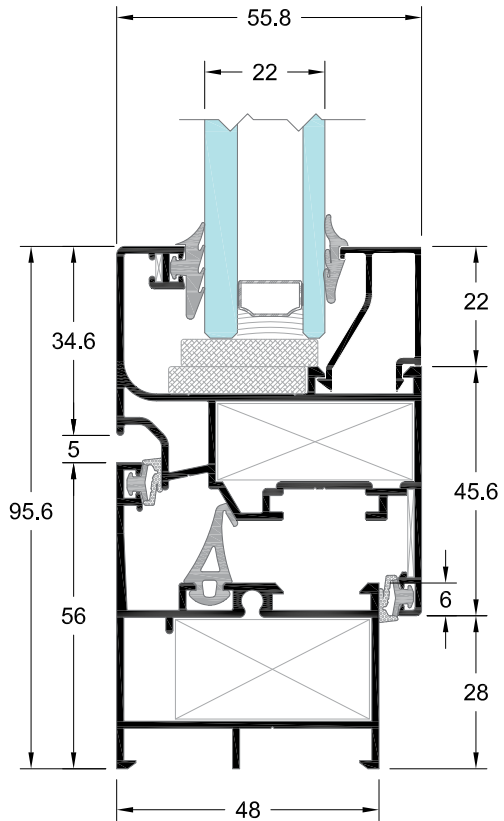
### System Identity

Particularly emphasizing on design, resistance and functionality, the system has been principally designed in order to facilitate the construction procedure and reduce the installation time. W540 can be realized with all types of inward and outward opening windows and doors, with an extensive choice of different mechanisms.

These characteristics place W540 among the most flexible, affordable non-insulated systems of the market. The numerous combinations of elements make W540 extremely suitable for all types of building concepts.

### Features & Benefits

- Robust and durable system of elevated functionality
- Numerous aesthetic options from profiles in straight and curved cross sections
- Exceptional water tightness characteristics



## Technical data

### HARDWARE

CAMERA	CE	ALU 16
--------	----	--------

### SYSTEM PROFILE DIMENSIONS

MIN. FRAME DEPTH mm	48	55.8
MIN. FACE HEIGHT mm	95.6	102.9
GLASS THICKNESS mm	4-32	4-32

### CONSTRUCTION DIMENSIONS

SASH WIDTH mm	365-1600	360-1490
SASH HEIGHT mm	360-2400	450-2360
MAX. SASH DIMENSIONS mm (WxH)	1600x2100 / 1300x2400	1490x2100 / 1300x2360
MAX. SASH WEIGHT Kg	130, 150*, 200**	130, 150*, 200**

### CERTIFICATES/PERFORMANCES

AIR PERMEABILITY EN 12207	Class 3	Class 4
WATER TIGHTNESS EN 12208	E750	Class 8A
RESISTANCE TO WIND LOAD EN 12210	Class C5	Class C4
BURGLAR RESISTANCE EN 1627	RC2/RC2N	N/A

### Configurations

**Casement windows:** 1Leaf - 2Leaf - 3Leaf - 4Leaf

**Casement-awning windows:** 1Leaf - 2Leaf

**Shutters:** 1Leaf - 2Leaf - 3Leaf - 4Leaf

**Doors:** 1Leaf - 2Leaf - Tilt & Slide (VW)

**Angular structure:** 35°-175° with Ø60

**Fixed-picture windows**

**Combinations:** 2Leaf sliding with insect screen SL320 with opening W540







# W450

## Tilt & Turn Thermal Insulating System

Maximum energy saving.

### System Identity

The W450 system belongs to the thermal insulation systems generation and has been designed with attention to detail in order to meet contemporary architectural needs for energy efficiency and safety.

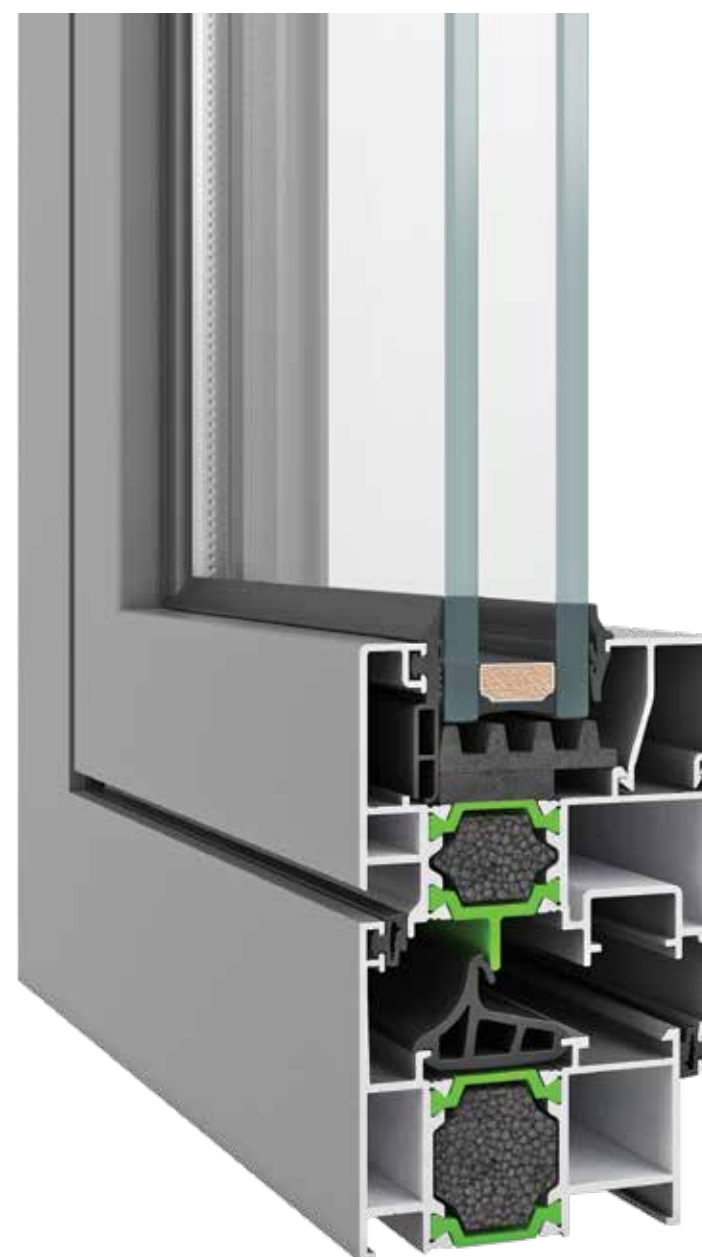
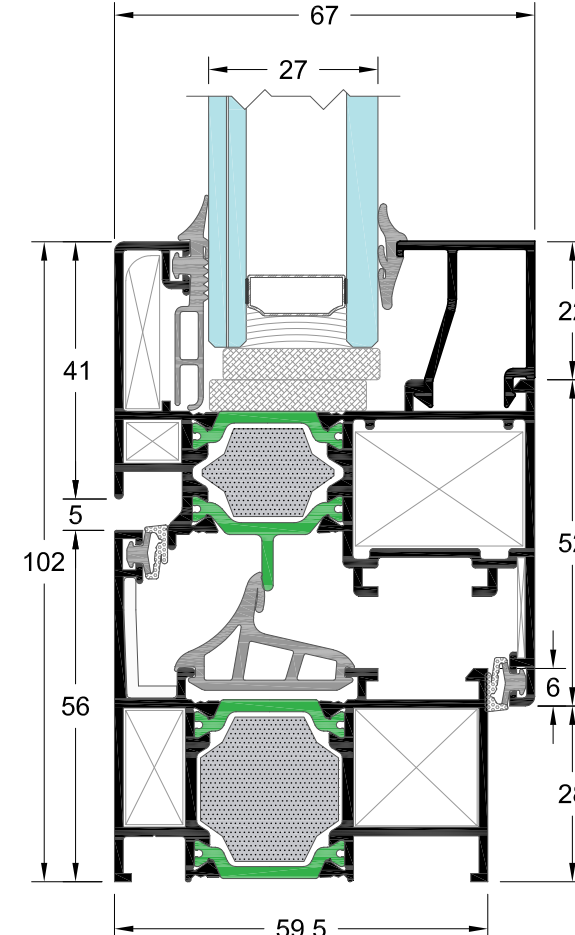
This line's wide range of profiles offer numerous innovative solutions, from flat to curved sections, as well as the ability to apply complex typologies such as “aller-retour” doors, rotating windows and opening frames with hidden sash in order to achieve a high-level aesthetics.

The system's non-negotiable priority for maximum energy savings and high safety is ensured due to the possibility of perimeter locking and the use of 24 mm reinforced polyamides offering a Thermal insulation Index  $U_f=2.2-2.6$  W/m<sup>2</sup>K and a Sound Reduction Index  $R_w$  of 43 dB.

### Features & Benefits

- The maximum security provided by the use of multiple locking combined with the high performance of thermal and sound insulation guarantee excellent quality, functionality and significant energy saving.
- Use of glass reinforced polyamides (PA66 GF25) of 24 mm.
- Multi-chamber central gasket that secures optimum impermeability preventing energy loss.
- Option of using mechanisms CAMERA EUROPEA & CAMERA ALU 16 (stainless steel locking mechanism on perimeteric system).
- Manufacturing capabilities with bead cutting of 45° and snap-joined bead for excellent aesthetic result to the inside of frames.
- “Curtain” gaskets that deliver extra thermal insulation.

**ALUMINCO**



Rate of Insulation

**$U_w=1.4$  W/m<sup>2</sup>K**

Thermal conductivity coefficient has been calculated for the construction:  
1600x2400 with  $U_g=0.6$  W/m<sup>2</sup>K  
Glass type: 5/16 (ARGON) / 3+3

## Technical data

### HARDWARE

CAMERA	CE	ALU 16
--------	----	--------

### INSULATION

POLYAMIDES mm	24	24
FOAM	•	•

### SYSTEM PROFILE DIMENSIONS

MIN. FRAME DEPTH mm	59.5	59.5
MIN. FACE HEIGHT mm	102	102
GLASS THICKNESS mm	15-51	15-51

### CONSTRUCTION DIMENSIONS

SASH WIDTH mm	365-1600	360-1490
SASH HEIGHT mm	360-2400	450-2360
MAX. SASH DIMENSIONS mm (WxH)	1600x2100 / 1300x2400	1490x2100 / 1300x2360
MAX. SASH WEIGHT Kg	130, 150*, 200**	130, 150*, 200**

### CERTIFICATES/PERFORMANCES

AIR PERMEABILITY EN 12207	Class 4	Class 4
WATER TIGHTNESS EN 12208	Class 6A	Class 8A
RESISTANCE TO WIND LOAD EN 12210	Class C3/B3	Class C5/B5
SOUND REDUCTION $R_w$ EN 717	43 dB (-2;-7)	43 dB (-2;-7)
THERMAL INSULATION $U_f$ EN ISO 10077-2	2.2-2.6 W/m <sup>2</sup> K	2.2-2.6 W/m <sup>2</sup> K

### Configurations

**Casement windows:** 1Leaf - 2Leaf - 3Leaf - 4Leaf - Pivot

**Casement-awning windows:** 1Leaf - 2Leaf

**Shutters:** 1Leaf - 2Leaf - 3Leaf - 4Leaf

**Doors:** 1Leaf - 2Leaf - Aller Retour - Tilt & Slide (VW)

**Angular structure:** 90°-224°

**Fixed-picture windows**

**Combinations:** 2Leaf sliding SL200 & SL2450 with opening W450

2Leaf sliding with insect screen SL200 with opening W450







# W450 HS

## Tilt & Turn Thermal Insulating System

An exceptional aesthetic result.

### System Identity

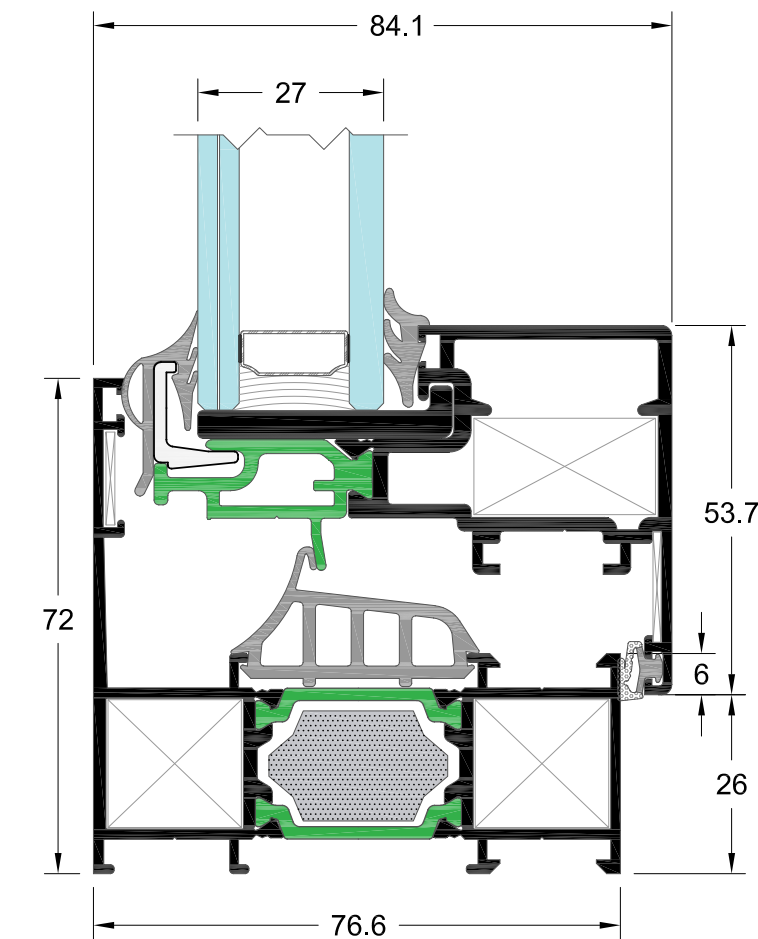
The W450 system belongs to the thermal insulation systems generation and has been designed with attention to detail in order to meet contemporary architectural needs for energy efficiency and safety.

This line's wide range of profiles offer numerous innovative solutions, from flat to curved sections, as well as the ability to apply complex typologies such as "aller-retour" doors, rotating windows and opening frames with hidden sash in order to achieve a high-level aesthetics.

The system's non-negotiable priority for maximum energy savings and high safety is ensured due to the possibility of perimeter locking and the use of 24 mm reinforced polyamides offering a Thermal insulation Index  $U_f=2.2-2.6$  W/m²K and a Sound Reduction Index  $R_w$  of 43 dB.

### Features & Benefits

- The maximum security provided by the use of multiple locking combined with the high performance of thermal and sound insulation guarantee excellent quality, functionality and significant energy saving.
- Use of glass reinforced polyamides (PA66 GF25) of 24 mm.
- Multi-chamber central gasket that secures optimum impermeability preventing energy loss.
- Option of using mechanisms CAMERA EUROPEA & CAMERA ALU 16 (stainless steel locking mechanism on perimeteric system).
- Manufacturing capabilities with bead cutting of 45° and snap-joined bead for excellent aesthetic result to the inside of frames.
- "Curtain" gaskets that deliver extra thermal insulation.



Rate of Insulation  
 **$U_w=1.76$  W/m²K**  
Thermal conductivity coefficient has been calculated for the construction: 1600x2200 with  $U_g=1.1$  W/m²K  
Glass type: 3+3 /16(ARGON)/5

## Technical data

HARDWARE		
CAMERA	CE	ALU 16

INSULATION		
POLYAMIDES mm	24	24
FOAM	•	•

SYSTEM PROFILE DIMENSIONS		
MIN. FRAME DEPTH mm	59.5	59.5
MIN. FACE HEIGHT mm	102	102
GLASS THICKNESS mm	15-51	15-51

CONSTRUCTION DIMENSIONS		
SASH WIDTH mm	365-1600	360-1490
SASH HEIGHT mm	360-2400	450-2360
MAX. SASH DIMENSIONS mm (WxH)	1600x2100 / 1300x2400	1490x2100 / 1300x2360
MAX. SASH WEIGHT Kg	130, 150*, 200**	130, 150*, 200**

CERTIFICATES/PERFORMANCES		
AIR PERMEABILITY EN 12207	Class 4	Class 4
WATER TIGHTNESS EN 12208	Class 6A	Class 8A
RESISTANCE TO WIND LOAD EN 12210	Class C3/B3	Class C5/B5
SOUND REDUCTION $R_w$ EN 717	43 dB (-2;-7)	43 dB (-2;-7)
THERMAL INSULATION $U_f$ EN ISO 10077-2	2.2-2.6 W/m²K	2.2-2.6 W/m²K

### Configurations

#### Tilt & turn windows & Doors

1Leaf - 2Leaf & 1Leaf - fixed







# W4750

## Tilt & Turn Highly Thermal Insulating System

The most demanding thermal insulation requirements.

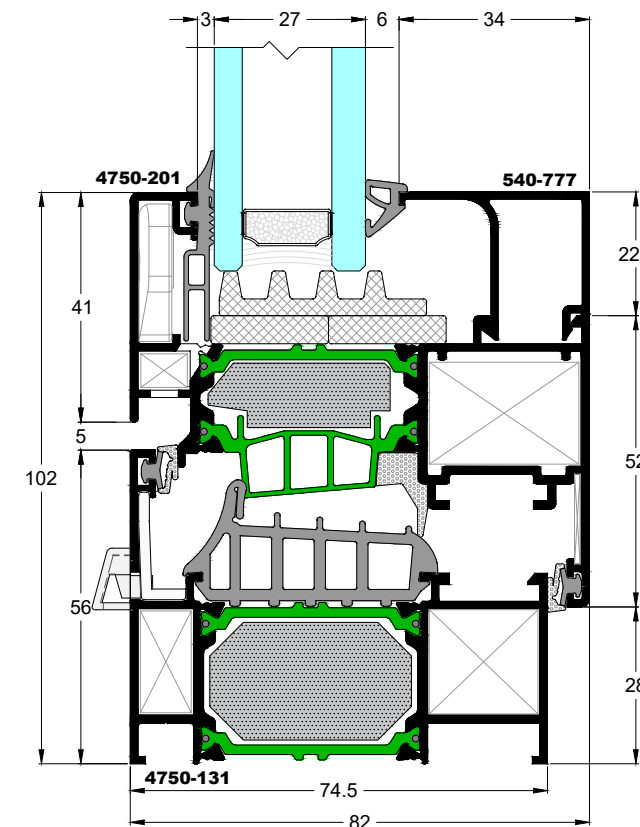
### System Identity

The ALUMINCO W4750 is an advanced aluminium system that combines the proven benefits of hinged windows and doors - elegant design and maximum safety - with the highest thermal insulation requirements. Three incomparable advantages, the use of 39 mm reinforced polyamides, the EPDM central gasket and the advanced perimeter locking mechanism, all in one system offer an outstanding Thermal Insulation Index  $U_f \geq 1.2 \text{ W/m}^2\text{K}$ .

It constitutes an ideal solution for high-end residential and commercial projects that require high energy efficient performance with a high degree of design along with top functionality.

### Features & Benefits

- Use of glass reinforced polyamides and a foam insulating material, that offer top insulation rate  $U_w=1.00 \text{ W/m}^2\text{K}$ .
- Visible aluminium face width 102 mm.
- High water tightness performance due to the use of 3-level gaskets and multi chamber EPDM gasket of double extrusion
- The advanced ALU16 locking mechanism offers better safety and high protection.
- Large range of aesthetic solutions, of profiles in straight and curved cross-section with the ability to manufacture all types of openings frames
- Ideal solution for houses and buildings of high energy requirements.



Rate of Insulation

**$U_w=1.0 \text{ W/m}^2\text{K}$**

Thermal conductivity coefficient has been calculated for the construction: 1230x1480 with  $U_g=0.6 \text{ W/m}^2\text{K}$   
Glass type: 44 mm=4+16+4+16+4

## Technical data

### HARDWARE

CAMERA	CE	ALU 16
--------	----	--------

### INSULATION

POLYAMIDES mm	39	39
FOAM	•	•

### SYSTEM PROFILE DIMENSIONS

MIN. FRAME DEPTH mm	74.5	74.5
MIN. FACE HEIGHT mm	102	102
GLASS THICKNESS mm	21-66	21-66

### CONSTRUCTION DIMENSIONS

SASH WIDTH mm	365-1600	360-1490
SASH HEIGHT mm	360-2400	450-2360
MAX. SASH DIMENSIONS mm (WxH)	1600x2100 / 1300x2400	1490x2100 / 1300x2360
MAX. SASH WEIGHT Kg	130, 150*, 200**	130, 150*, 200**

### CERTIFICATES/PERFORMANCES

AIR PERMEABILITY EN 12207	Class 4	Class 4
WATER TIGHTNESS EN 12208	E1200	E1200
RESISTANCE TO WIND LOAD EN 12210	Class C5/B5	Class C5/B5
SOUND REDUCTION $R_w$ EN 717	39 dB	39 dB
THERMAL INSULATION $U_f$ EN ISO 10077-2	1.2-2.3 W/m²K	1.2-2.3 W/m²K

## Configurations

**Casement windows:** 1Leaf - 2Leaf - 3Leaf - 4Leaf

**Casement-awning windows:** 1Leaf - 2Leaf

**Shutters:** 1Leaf - 2Leaf - 3Leaf - 4Leaf

**Doors:** 1Leaf - 2Leaf - Tilt & Slide (VW)

**Angular structure:** 90°-224°

**Fixed-picture windows**

**Combinations:** 2Leaf sliding SL2450, 2Leaf sliding with insect screen SL200







# W4900



## Tilt & Turn Thermal Insulating System

Innovative Concept with a passive house certification.

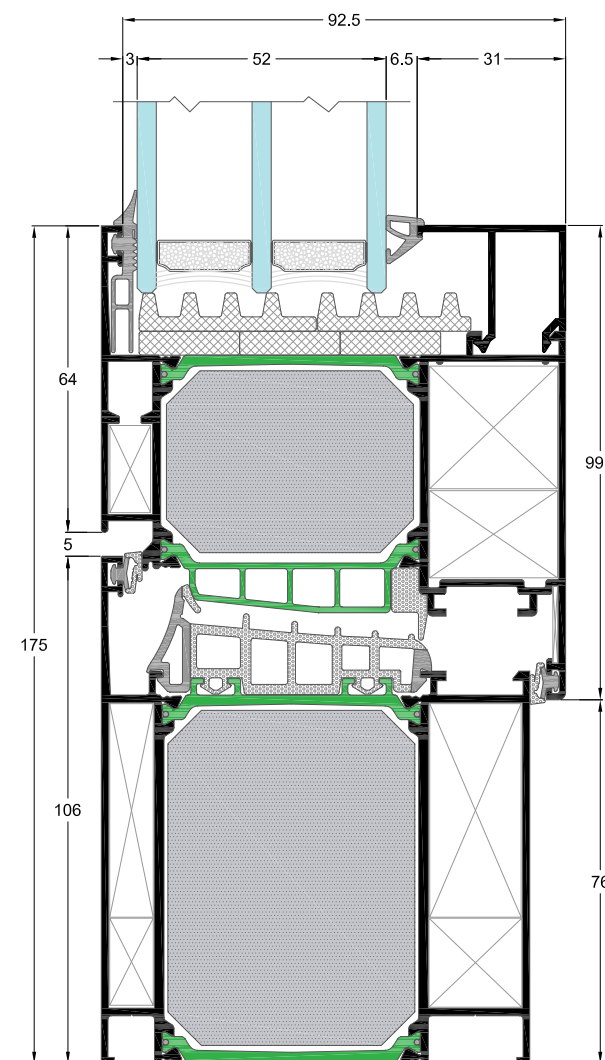
### System Identity

The ALUMINCO W4900 aluminium window system has been certified by the Passive House Institute (PHI) in order to meet the high requirements of passive houses.

It incorporates all the well-known benefits of aluminium windows such as stability and high structural requirements with a superior level of thermal insulation value of  $U_w=0.78 \text{ W/m}^2\text{K}$  and the greatest possible degree of architectural design freedom.

### Features & Benefits

- Unique thermal insulation for aluminium windows in accordance with the passive house certification standard.
- Innovative insulation system thanks to 54 mm polyamides offering  $U_f$  value =  $0.76 \text{ W/m}^2\text{K}$  with 102 mm face width.
- Increased sound reduction
- Multi-chamber central gasket that ensures optimum impermeability preventing energy loss.
- Superior safety due to the multiple perimetric locking
- Vast selection of profiles in straight and curved cross sections.
- For all typologies of casements and patio doors.



## Technical data

### HARDWARE

CAMERA	CE	ALU 16
--------	----	--------

### INSULATION

POLYAMIDES mm	54	54
FOAM	•	•

### SYSTEM PROFILE DIMENSIONS

MIN. FRAME DEPTH mm	89.5	89.5
MIN. FACE HEIGHT mm	175	102
GLASS THICKNESS mm	46-81	46-81

### CONSTRUCTION DIMENSIONS

SASH WIDTH mm	365-1600	360-1490
SASH HEIGHT mm	360-2400*	450-2360*
MAX. SASH DIMENSIONS mm (WxH)	1600x2100 / 1300x2400	1490x2100 / 1300x2360
MAX. SASH WEIGHT Kg	130, 150*, 200**	130, 150*, 200**

### CERTIFICATES/PERFORMANCES

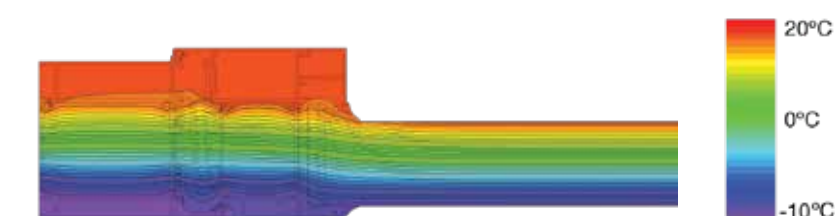
THERMAL INSULATION $U_f$ EN ISO 10077-2	$0.76 \text{ W/m}^2\text{K}$	$0.76 \text{ W/m}^2\text{K}$
-----------------------------------------	------------------------------	------------------------------

### Configurations

**Casement windows:** 1Leaf - 2Leaf - 3Leaf - 4Leaf

**Casement-awning windows:** 1Leaf - 2Leaf

**Fixed-picture windows**



Rate of Insulation

**$U_w=0.78 \text{ W/m}^2\text{K}$**

Thermal conductivity coefficient has been calculated for the construction:  
1230x1480 with  $U_g=0.7 \text{ W/m}^2\text{K}$   
Glass type: 48 mm=4+18+4+18+4

**ALUMINCO**





**ALUMINCO W4900**





# D110

## Pivot Door System

The epitome of magnificence.

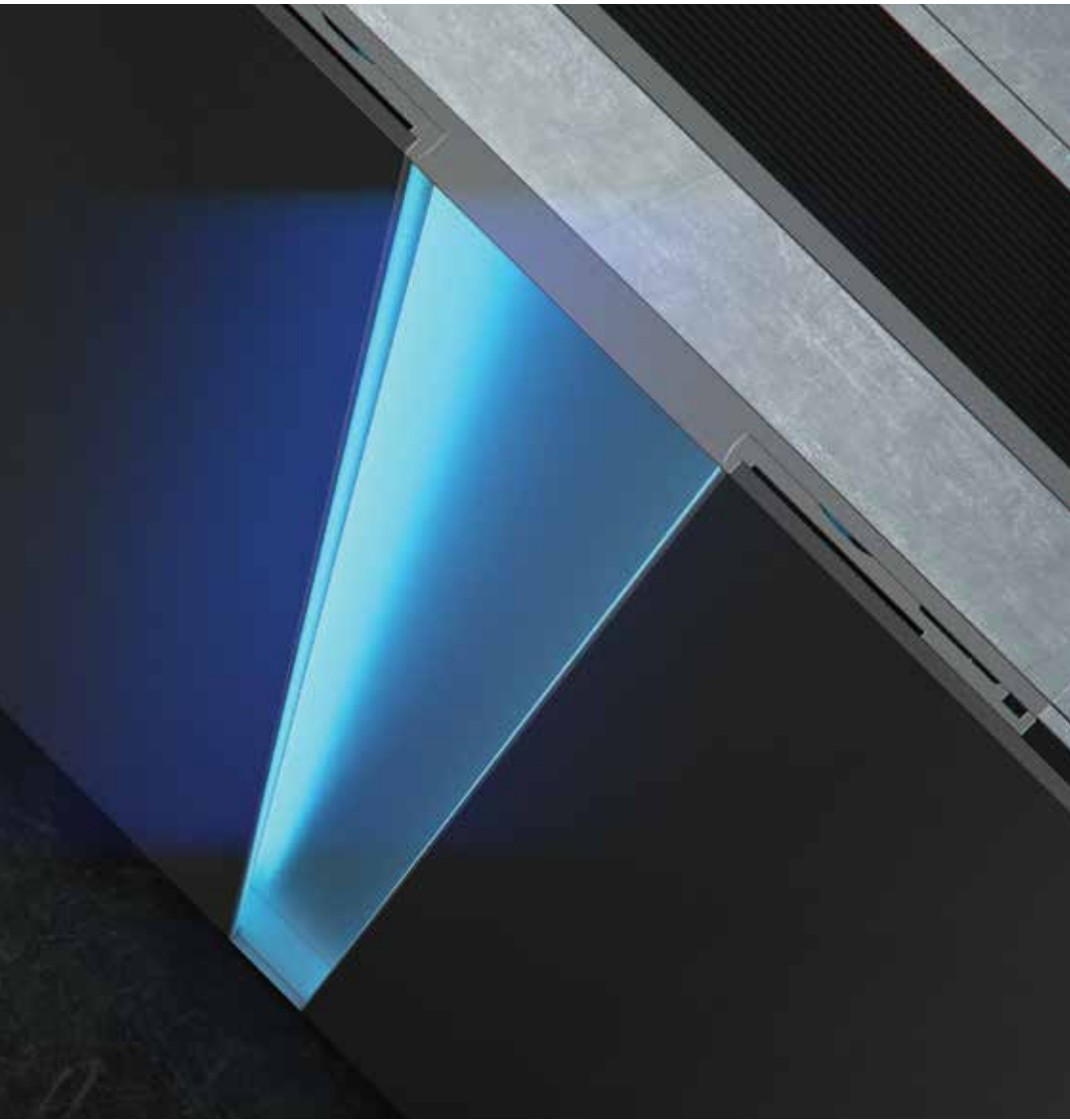
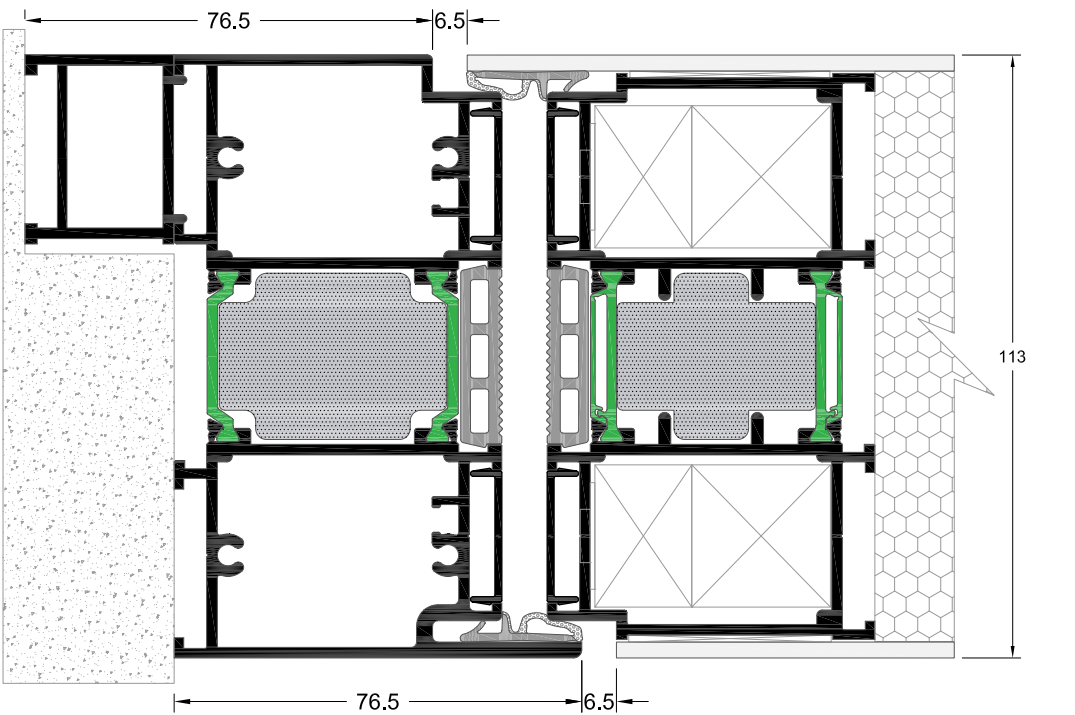
### System Identity

Combining innovative technologies with special design lines, D110 Pivot Door by Aluminco creates the perfect entry into a home or commercial property.

Impactful and beautiful design options, amazing strength, powerful hardware, massive panels, open with ease, are combined to make our pivot door the number one choice for entry doors.

### Features & Benefits

- Anti-bi-metal polyamides, 32 mm, minimize the operational problems due to the temperature difference between inside and outside.
- Hidden pivot mechanism with door adjustment feature (right – left).
- On-floor powerful rotation mechanism.
- Hidden brake mechanism ensures slow and safe closing of the door, reducing the noise level and minimizing the risk of injury.
- Stainless steel single or multipoint lock with high burglar resistance cylinder.
- Low 20 mm threshold provides easy access, suitable for people with disabilities.
- Integrated recessed external handle of special design. The handle can optionally be illuminated by LED technology.
- Frame and sash create a flat surface.



## Technical data

INSULATION	
ANTI BI-METAL POLYAMIDES mm	32
FOAM	•

SYSTEM PROFILE DIMENSIONS	
FRAME DEPTH mm	113
DOOR THICKNESS mm	113
ALUMINIUM SHEET THICKNESS mm	3
INSULATION THICKNESS mm	107
ROTATION AXE FROM SASH END mm	250

CONSTRUCTION DIMENSIONS	
SASH WIDTH mm	1000-2000
SASH HEIGHT mm	2100-3000
MAX. SASH DIMENSIONS mm (WxH)	1700x3000
MAX. SASH WEIGHT Kg	250

PERFORMANCES	
ATHERMAL INSULATION U <sub>f</sub> Edge ISO 10077-2	2.2-2.8 W/m²K

### Configurations

#### Door system



Rate of Insulation  
**U<sub>d</sub>=0.69 W/m²K**  
Thermal conductivity coefficient has been calculated  
for the construction: 2000x3000 with U<sub>p</sub>=0.27 W/m²K  
Type of panel: 3/107/3







# D75

## High-performance Insulated Entrance Doors System

Energy efficiency, structural stability and functionality.

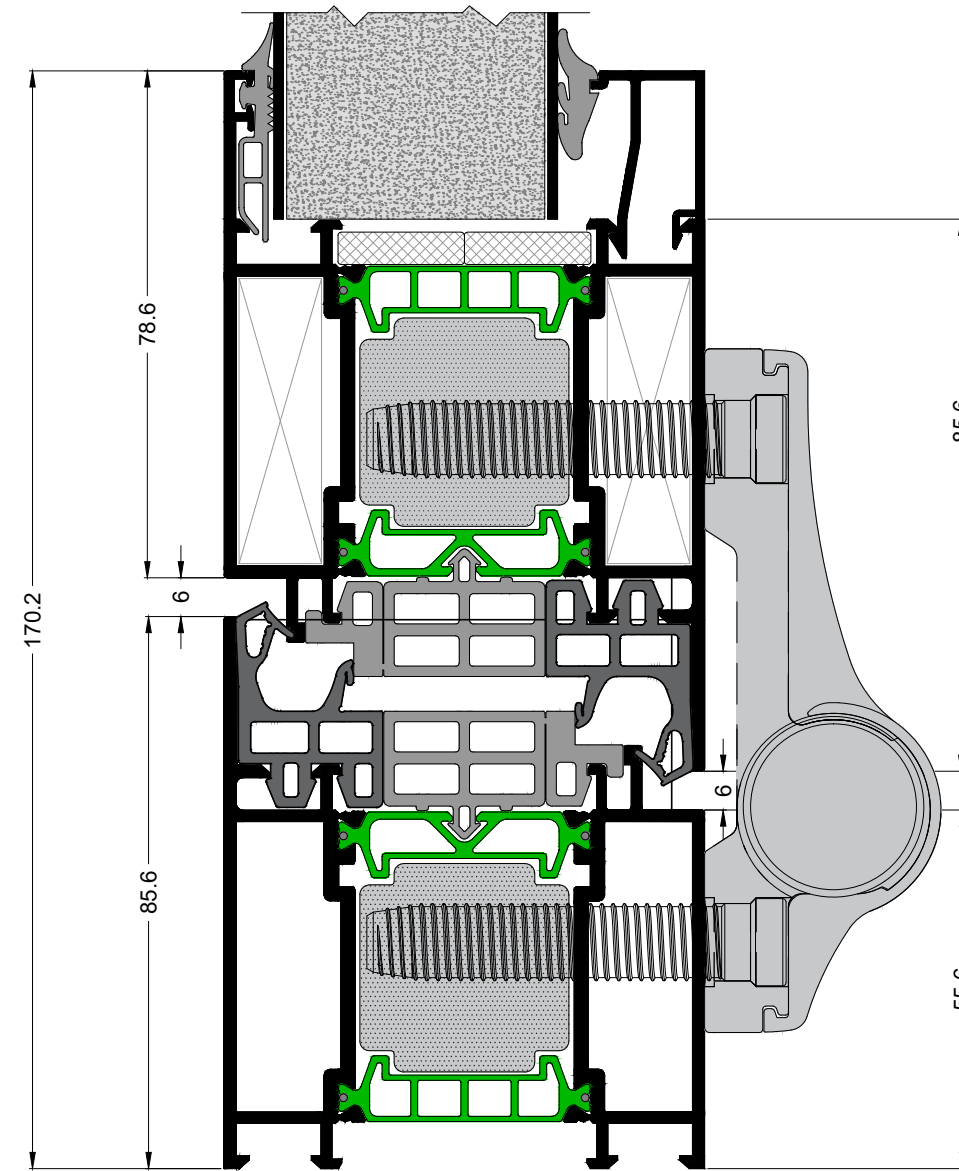
### System Identity

ALUMINCO's D75 is a highly insulated entrance door system that brings together the benefits of energy efficiency, structural stability and functionality. Enhanced features and functions ensure optimum performance in terms of security and ease of use. In terms of design, Aluminco D75 offers a sophisticated architectural design of impressive flat lines. The surface of the door infill can be combined either with aluminium panels or all-glass unit. The system provides the ability to create multiple constructions for both commercial and residential projects. Aluminco D75 solution combines what architects, fabricators and developers have always valued: the highest degree for energy efficiency, comfort and aesthetic visual impact in the best possible way – from the perception of the idea to its implementation.

### Features & Benefits

- Outstanding thermal insulation coefficient  $U_d=0.79 \text{ W/m}^2\text{K}$
- Polyamides 39 mm for increased performance and minimization of the bimetallic effect.
- Optional insulation zone with foam filling ensures the highest level of thermal insulation.
- 3 sealing levels with EPDM gaskets and a special EPDM foam gasket provide optimum water tightness.
- Top security features achieved by the 3-point security locks and door hinges that can be either concealed or surface mounted.
- Continuous low threshold of 13 mm height increases stability, enhances water tightness and minimizes energy loss.
- Aluminum panels or glazing infills provide multiple design options.

ALUMINCO



## Technical data

### INSULATION

POLYAMIDES mm	39
FOAM	•

### SYSTEM PROFILE DIMENSIONS

MIN. FRAME DEPTH mm	74.5
MIN. FACE HEIGHT mm	170.2
GLASS THICKNESS mm	44-52

### CONSTRUCTION DIMENSIONS

SASH WIDTH mm	1400
SASH HEIGHT mm	3000
MAX. SASH WEIGHT Kg	200

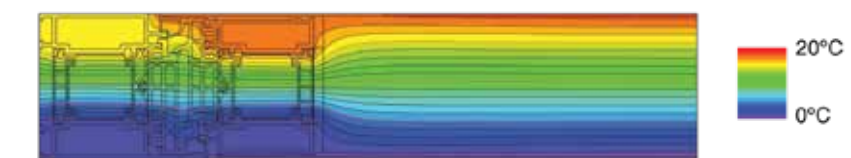
### CERTIFICATES/PERFORMANCES

AIR PERMEABILITY EN 12207	Class 3
WATER TIGHTNESS EN 12208	Class 5A
RESISTANCE TO WIND LOAD EN 12210	Class C1/B1
SOUND REDUCTION $R_w$ (C;Ctr) EN 717	44 (-1;-4) dB
THERMAL INSULATION $U_f$ EN 10077-2	1.5-1.7 $\text{W/m}^2\text{K}$
THERMAL INSULATION $U_{f,Edge}$ EN 10077-2	1.5-2.3 $\text{W/m}^2\text{K}$

### Configurations

**Doors:** 1Leaf - 2Leaf with fixed

**Combinations:** 1Leaf - 2Leaf with W4750



### Rate of Insulation

**$U_d=0.79 \text{ W/m}^2\text{K}$**

Thermal conductivity coefficient has calculated for the construction:  
1300x2500 with  $U_p=0.40 \text{ W/m}^2\text{K}$   
Type of panel: 2/70.5/2



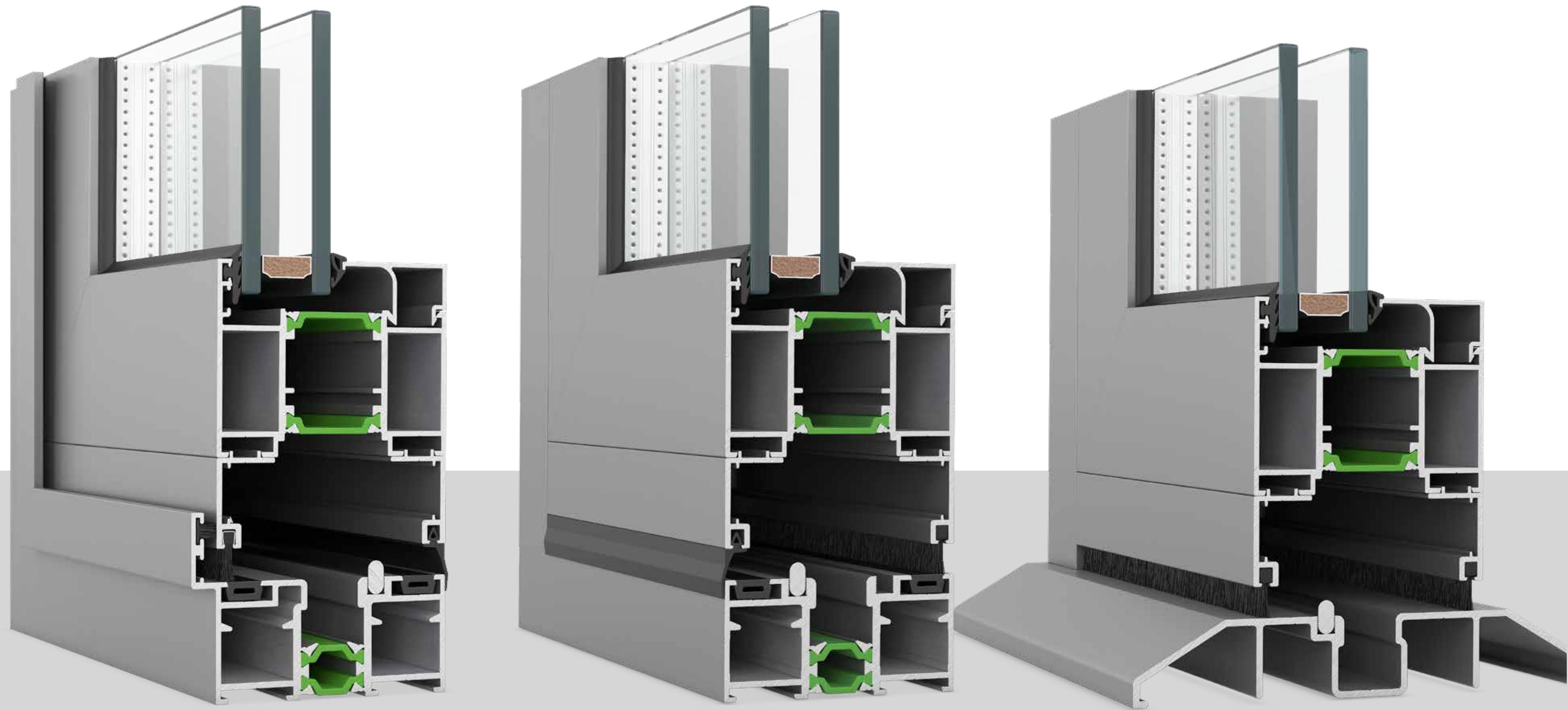


OPENING SYSTEMS

**ALUMINCO D75**



# FOLDING SYSTEMS





# FD75

## The Minimal Fold

### System Identity

Introducing the ultimate solution for modern, space-conscious living: The FD75 Minimal Folding Door System is an insulated folding system, maximizing natural daylighting and granting enhanced views with outstanding performance levels. Designed with precision and elegance, this innovative door system redefines how you experience your spaces. With its slim profile and bottom slide operation, it blends effortlessly into any interior, offering a sleek aesthetic without compromising functionality. Whether enhancing natural light, creating open-plan layouts, or maximizing compact areas, the FD75 Minimal Folding Door System delivers unmatched versatility. Crafted from best-in-class materials, it ensures durability, smooth operation, and a minimalist appeal that complements contemporary architecture. Transform your spaces with a design that's as practical as it is sophisticated.

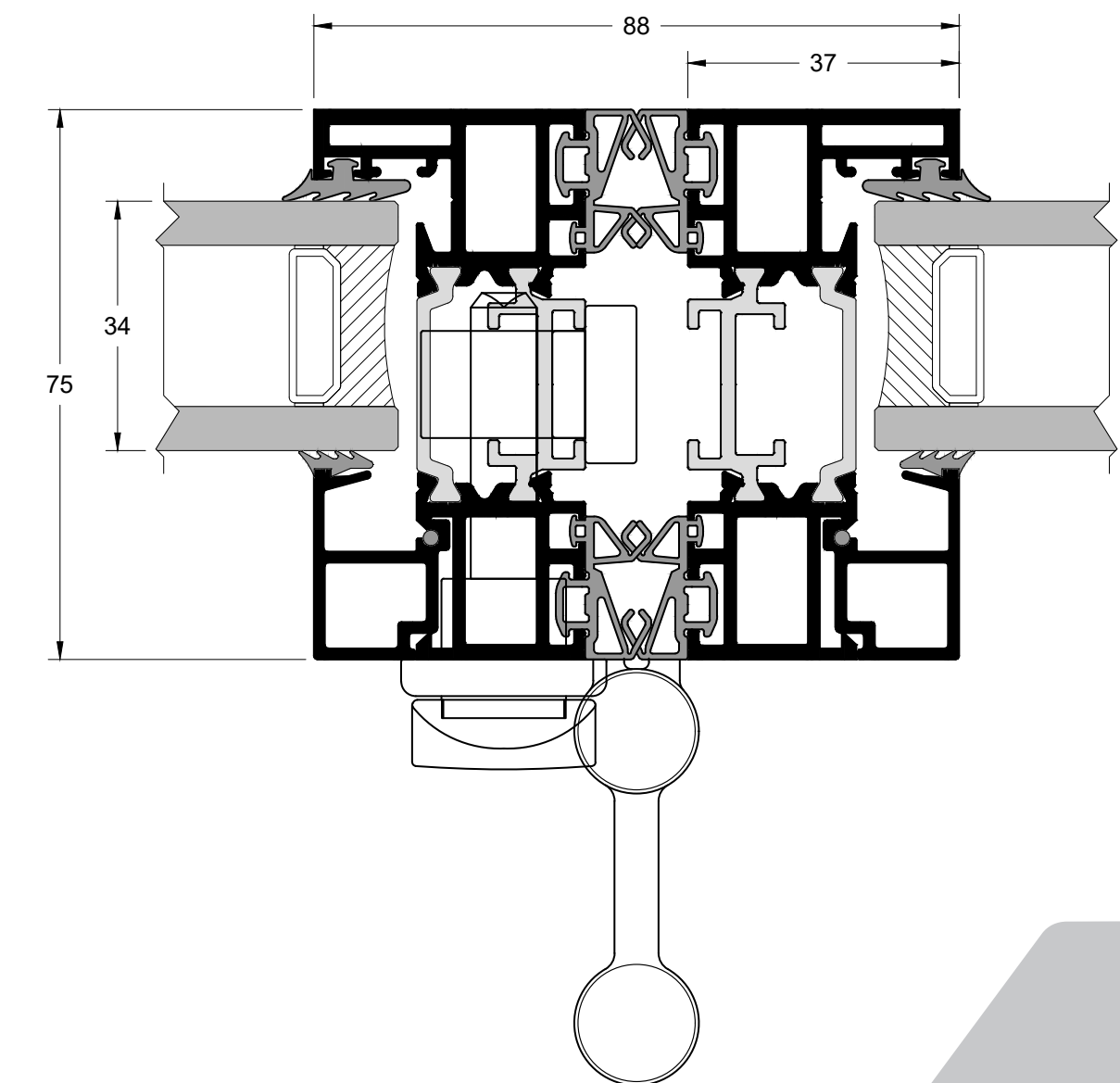
### Features & Benefits

- Ultra-thin frames for a sleek, modern aesthetic
- Maximized glass panels for brighter spaces
- Smooth Folding operation with precision-engineered rollers
- Ideal for compact areas and open-plan layouts
- Seals to ensure thermal efficiency and protection
- Blends harmoniously with contemporary interiors



### Technical data

Exterior Aesthetics	Flat / minimal design
Bottom Track Height	55 mm
Frame Height (Horizontal Top)	100 mm
Frame Height (Vertical)	55 mm
Sash Height (Vertical)	37 mm
Sash Height (Horizontal)	37 mm
Sash Width	75 mm
Sash To Sash Visible Aluminium	88 mm
Maximum Sash Width	1500 mm
Maximum Sash Height	4000 mm
Maximum Sash Weight	200 Kg
Type Of Insulation	Polyamides 18 mm









# FD4600

## Folding Thermal Insulating Door System

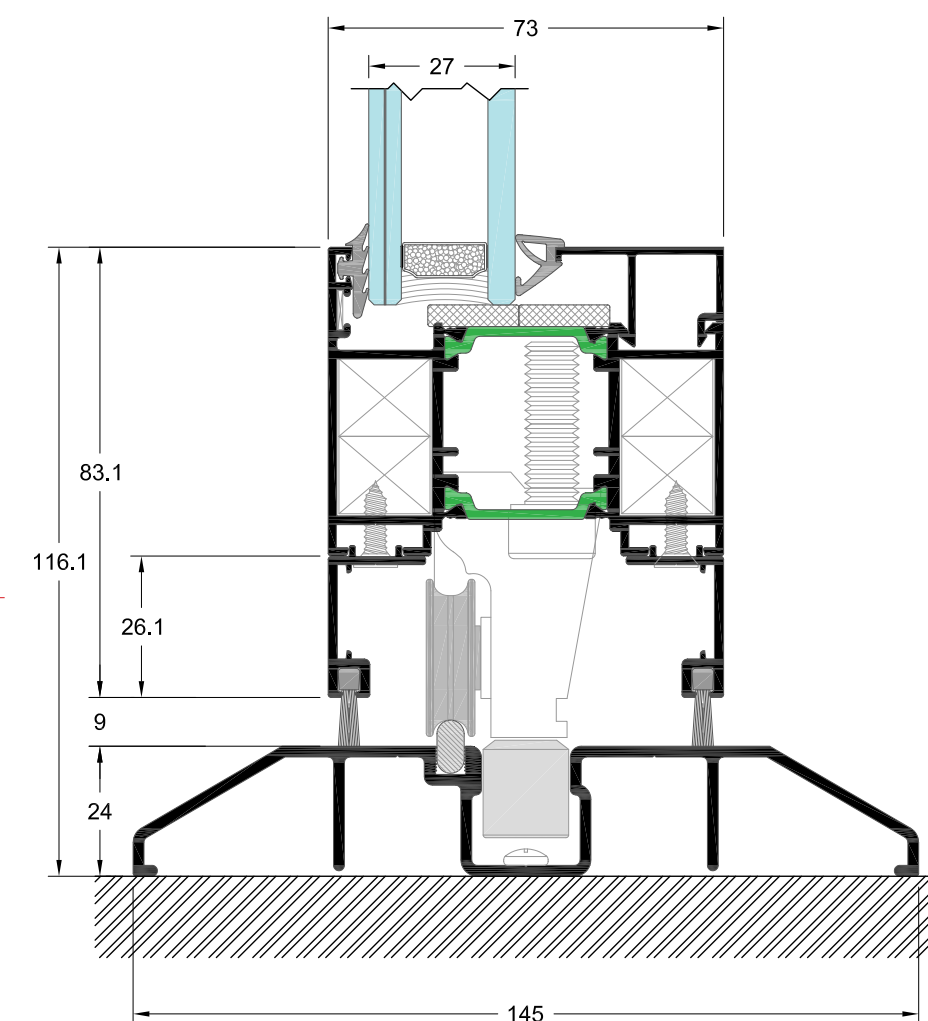
High comfort & maximal transparency.

### System Identity

FD4600 is a top class insulating system for folding doors, offering extremely high performance and impressive, out of competition, properties. The desire to create living spaces filled with daylight was never so feasible. This high performance system offers this advantage, as well as a minimal design, high insulation and functionality with hardware that have specifically been designed for folding systems. FD4600 is available in multiple threshold options in order to perfectly match all comfort and aesthetic requirements. The low threshold option offers a rise of only 24 mm (ramp) giving easy access to people with special needs and allowing maximum convenience for high-traffic areas. Specially designed rolling hinges, sliding smoothly on the bottom rail, ensure quietly and easily operation of the system.

### Features & Benefits

- High level of thermal insulation ( $U_f$  values down to  $2.1 \text{ W/m}^2\text{K}$ ) due to 30 mm polyamides.
- Exceptional water tightness, functionality, reliability and comfort.
- Suitable for large openings, every conceivable configuration achievable up to 14 leaves (7 left – 7 right) with maximum height 3 m and width of 1.20 m for each leaf.
- Ultra-smooth bottom running by using specially designed rolling hinges carrying maximum weight of 120 Kg per leaf.
- Possibility of open corners without any post.
- Able to open inward or outward door with locking system.
- Possibility of even number of openings (2, 4 etc.).
- Multiple threshold options.
- Special hinge with integrated built-in handle for easy locking.
- In and outward opening using the same profiles.
- Perfect choice for private homes, offices, restaurants and recreational areas.



## Technical data

### INSULATION

POLYAMIDES mm	20-30
---------------	-------

### SYSTEM PROFILE DIMENSIONS

MIN. RAIL WIDTH mm	73
VENT-VENT WIDTH mm	124
MIN. FRAME HEIGHT mm	24
MIN. FACE HEIGHT mm	127.1
GLASS THICKNESS mm	27-57

### CONSTRUCTION DIMENSIONS

SASH WIDTH mm	450-1200
SASH HEIGHT mm	600-3000
MAX. SASH DIMENSIONS mm (WxH)	1200x3000
MAX. SASH WEIGHT Kg	120

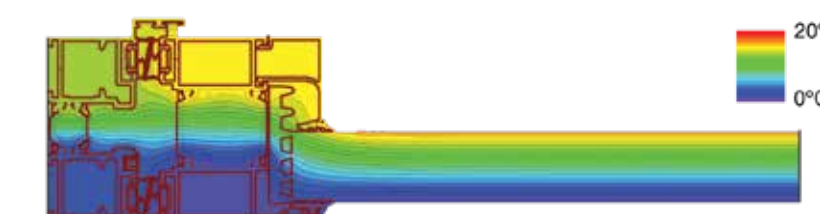
### CERTIFICATES/PERFORMANCES

AIR PERMEABILITY EN 12207	Class 3
WATER TIGHTNESS EN 12208	Class 2A
RESISTANCE TO WIND LOAD EN 12210	Class C3/B4
THERMAL INSULATION $U_f$ ISO 10077-2	2.1-3.1 $\text{W/m}^2\text{K}$

### Configurations

1Leaf, 2Leaf, 3Leaf... 7Leaf

**Angular structure:** 1Leaf, 2Leaf, 3Leaf... 7Leaf



Rate of Insulation

**$U_w=1.83 \text{ W/m}^2\text{K}$**

Thermal conductivity coefficient has been calculated for the construction: 3500x2500 with  $U_g=1.1 \text{ W/m}^2\text{K}$   
Glass type: 3+3/16 (ARGON) / 6

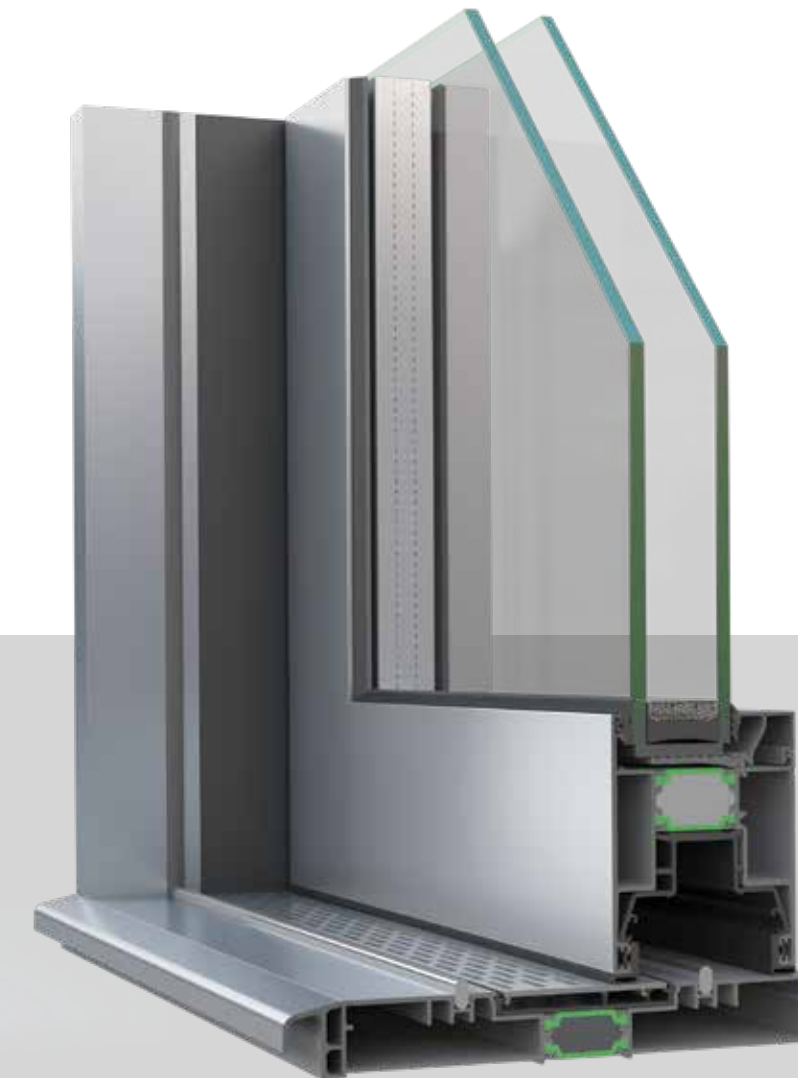
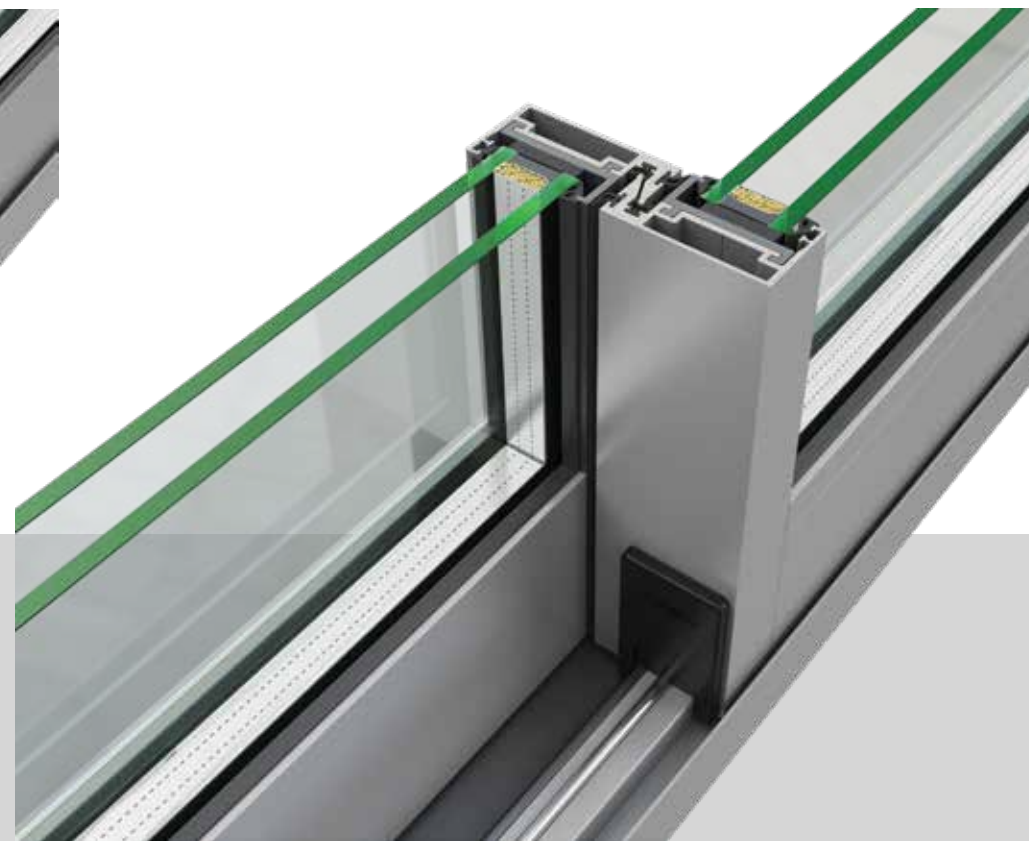
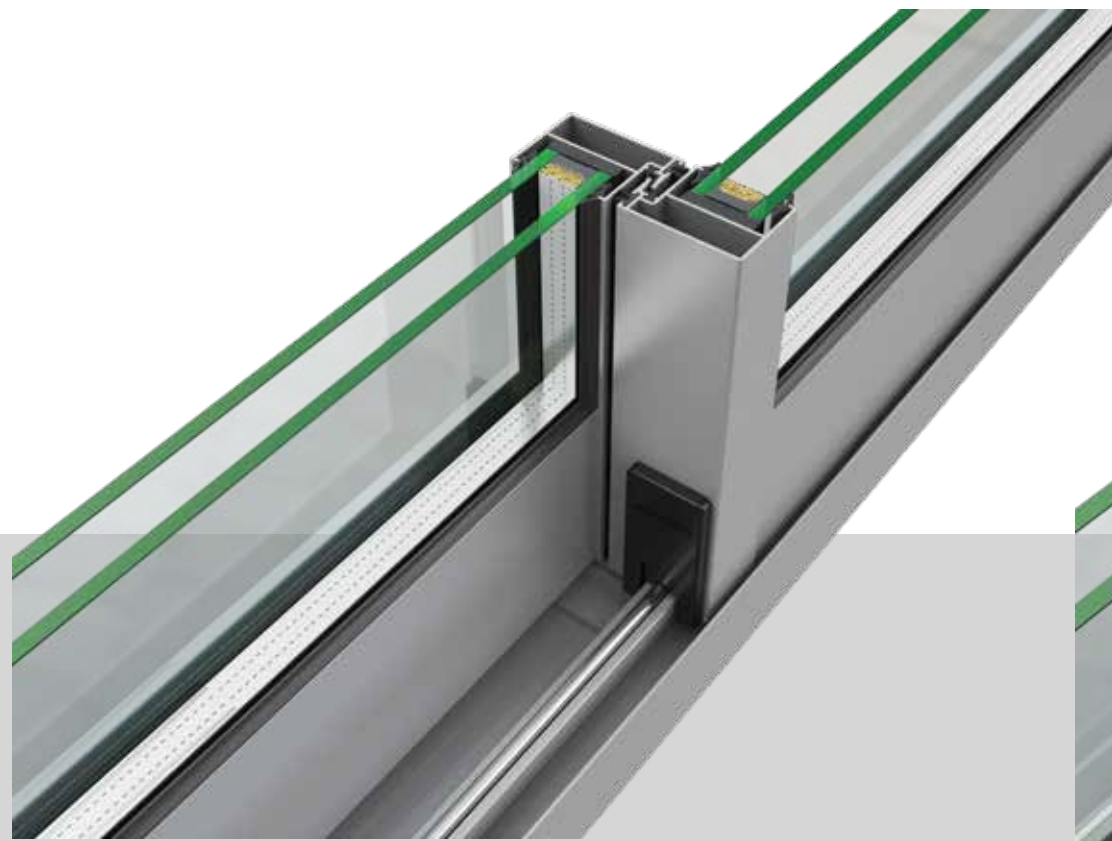




**ALUMINCO FD4600**



# SLIDING SYSTEMS





# SL320

## Slide - Lift and Slide System

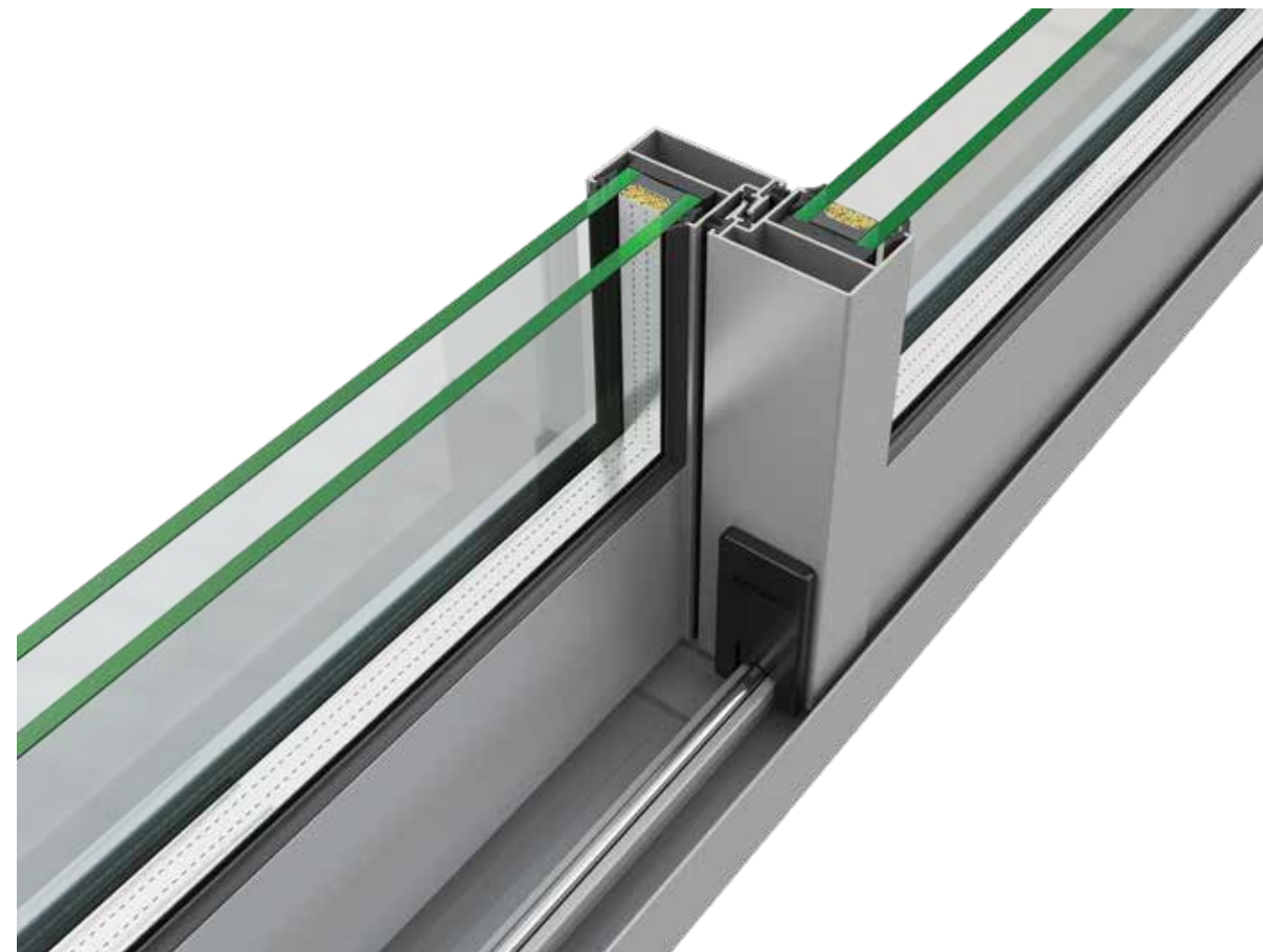
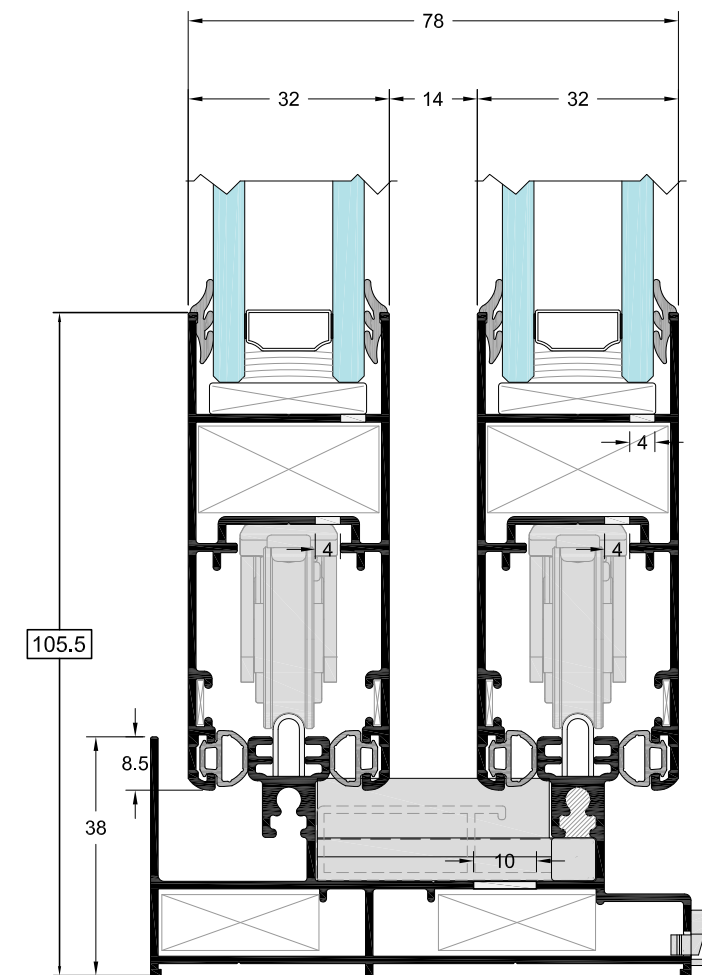
Super smart and slim.

### System Identity

SL320 is Aluminco's new slide - lift and slide system that upgrades the basic functions of a sliding system and incorporates smart features previously held by higher-end systems. The frame's exceptional design, with straight fine lines perfectly matches current architectural trends that call for minimal design, ensures a lightweight system and comes out in a number of typologies that can cover a range of needs, suitable for large constructions as well. With sliding and lift and slide mechanisms and a number of alternative solutions, it is the most suitable system for areas of warmer climate.

### Features & Benefits

- High level of aesthetic functionality.
- Minimal style and straight lines in combination with the low threshold option of 30 mm height offer particularly elegant structures and facilitate the access.
- Interlocking profile width of only 30 mm to maximize transparency and light penetration.
- The built-in handle at the junction point of the slim hook offers increased resistance to wind load.
- Wide range of configurations with sliding and Lift & Slide mechanisms.
- Smooth and easy sliding.
- Solutions for small, medium and large openings.



## Technical data

### HARDWARE

SLIDING	•
LIFT & SLIDE	•

### SYSTEM PROFILE DIMENSIONS

FRAME LIFT & SLIDE WIDTH mm	86
MIN. FRAME HEIGHT mm	30
MIN. FACE HEIGHT mm	97.5
GLASS THICKNESS mm	24
SASH WIDTH mm	32
SASH HEIGHT mm	76
INTERLOCKING PROFILE WIDTH mm	30

### CONSTRUCTION DIMENSIONS

SASH WIDTH mm	330-2000
SASH HEIGHT mm	520-2800
MAX. SASH DIMENSIONS mm (WxH)	2000x2400 / 1700x2800
MAX. SASH WEIGHT Kg	120 / 200*

### CERTIFICATES/PERFORMANCES

AIR PERMEABILITY EN 12207	Class 4
WATER TIGHTNESS EN 12208	Class 7A
RESISTANCE TO WIND LOAD EN 12210	Class C3/B4

### Combinations

2Leaf sliding SL320 with opening AL540, 2Leaf sliding with mosquito screen SL320 with opening W540, 3Leaf sliding SL320 with opening W540.





**ALUMINCO SL320**



# SL200

## Sliding Thermal Insulating System

Maximum space saving.

### System Identity

SL200 belongs to the generation of thermal insulation systems providing maximum space savings, high aesthetic, exceptional performance and excellent functionality. The special design of the system is based on the architectural trend that incorporates straight untied lines thus satisfying a wide range of requirements, both in existing and in new buildings. The series uses the anti bi-metal polyamide, the only solution (especially in sliding units) in order to prevent warping caused by the differences in temperature between the outside and inside profiles. SL200 adds higher performance characteristics in its category, with thermal insulation  $U_f$  from 2.1 W/m<sup>2</sup>K and sound reduction up to 26 dB.

### Features & Benefits

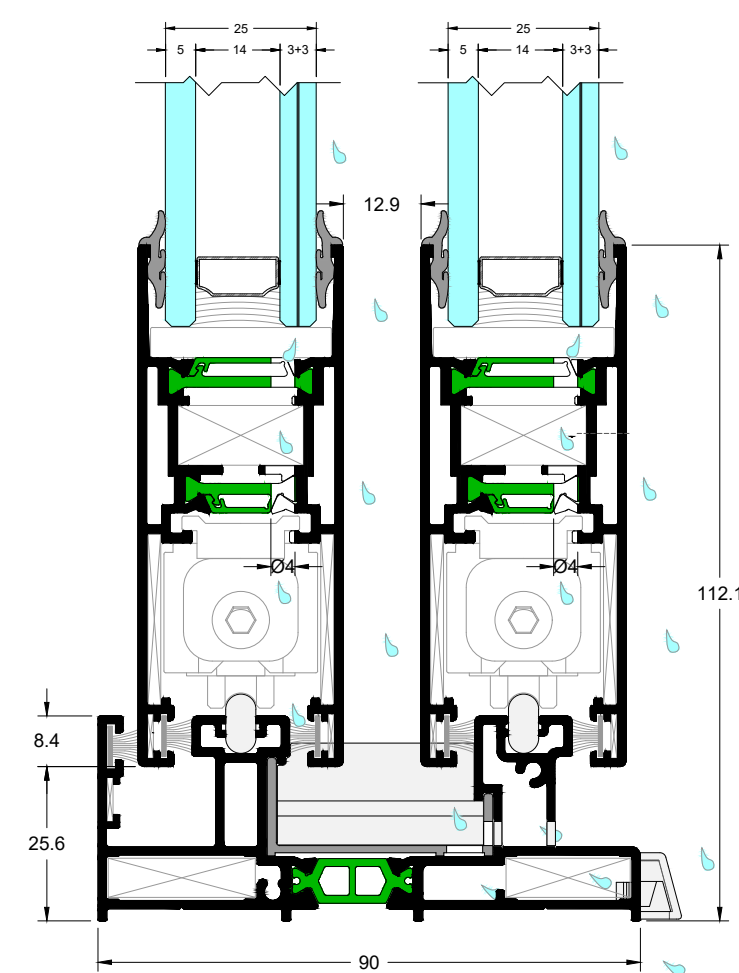
- Triple rail solution of glass, mosquito screen and shutter in 98.5 mm width and 32 mm height.
- Fortified overlapping rails with mechanical corner connection for demanding constructions.
- Special designed central adaptor of excellent functionality for ultimate water and air tightness.
- Offers high thermal insulation by using additional profiles to the hook profile section.

### Configurations

**Sliding:** 2Leaf sliding, 3Leaf sliding, 4Leaf double sliding, 6Leaf double sliding, 2Leaf sliding with insect screen

**Combinations:** 2Leaf sliding SL200 with opening W450

2Leaf sliding with insect screen SL200 with opening W450



## Technical data

### HARDWARE

SLIDING

•

### INSULATION

ANTI-BI-METAL POLYAMIDES mm

18-30

### SYSTEM PROFILE DIMENSIONS

FRAME LIFT & SLIDE WIDTH mm

90

MIN. FRAME HEIGHT mm

34

MIN. FACE HEIGHT mm

80 / 86.5

GLASS THICKNESS mm

up to 25

### CONSTRUCTION DIMENSIONS

SASH WIDTH mm

330-1800

SASH HEIGHT mm

510-2400

MAX. SASH DIMENSIONS mm (WxH)

1800x2200 / 1600x2400

MAX. SASH WEIGHT Kg

160

### CERTIFICATES/PERFORMANCES

AIR PERMEABILITY EN 12207

Class 3

WATER TIGHTNESS EN 12208

Class 3A

RESISTANCE TO WIND LOAD EN 12210

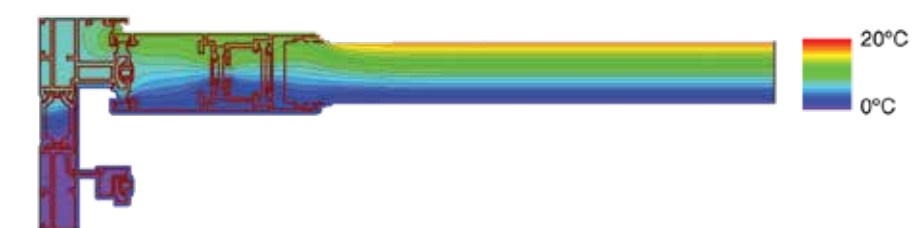
Class C3/B3

SOUND REDUCTION  $R_w$  (C;Ctr) EN 717

26 (0;-1) dB

THERMAL INSULATION  $U_f$  EN ISO 10077-2

2.1-5.1 W/m<sup>2</sup>K



Rate of Insulation

**$U_w=2.11$  W/m<sup>2</sup>K**

Thermal conductivity coefficient has been calculated for the construction:

1600x2200 with  $U_g=1.1$  W/m<sup>2</sup>K

Glass type: 5/14 (ARGON) / 3+3





SLIDING SYSTEMS

**ALUMINCO SL200**



# SL2450

## Lift & Slide Thermal Insulating System

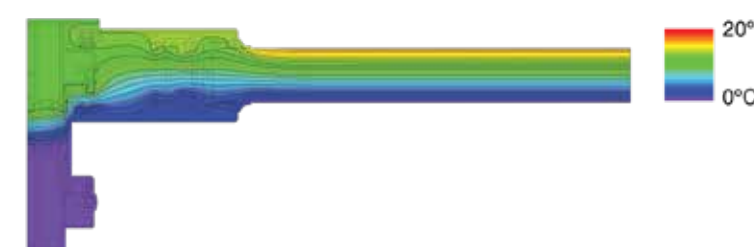
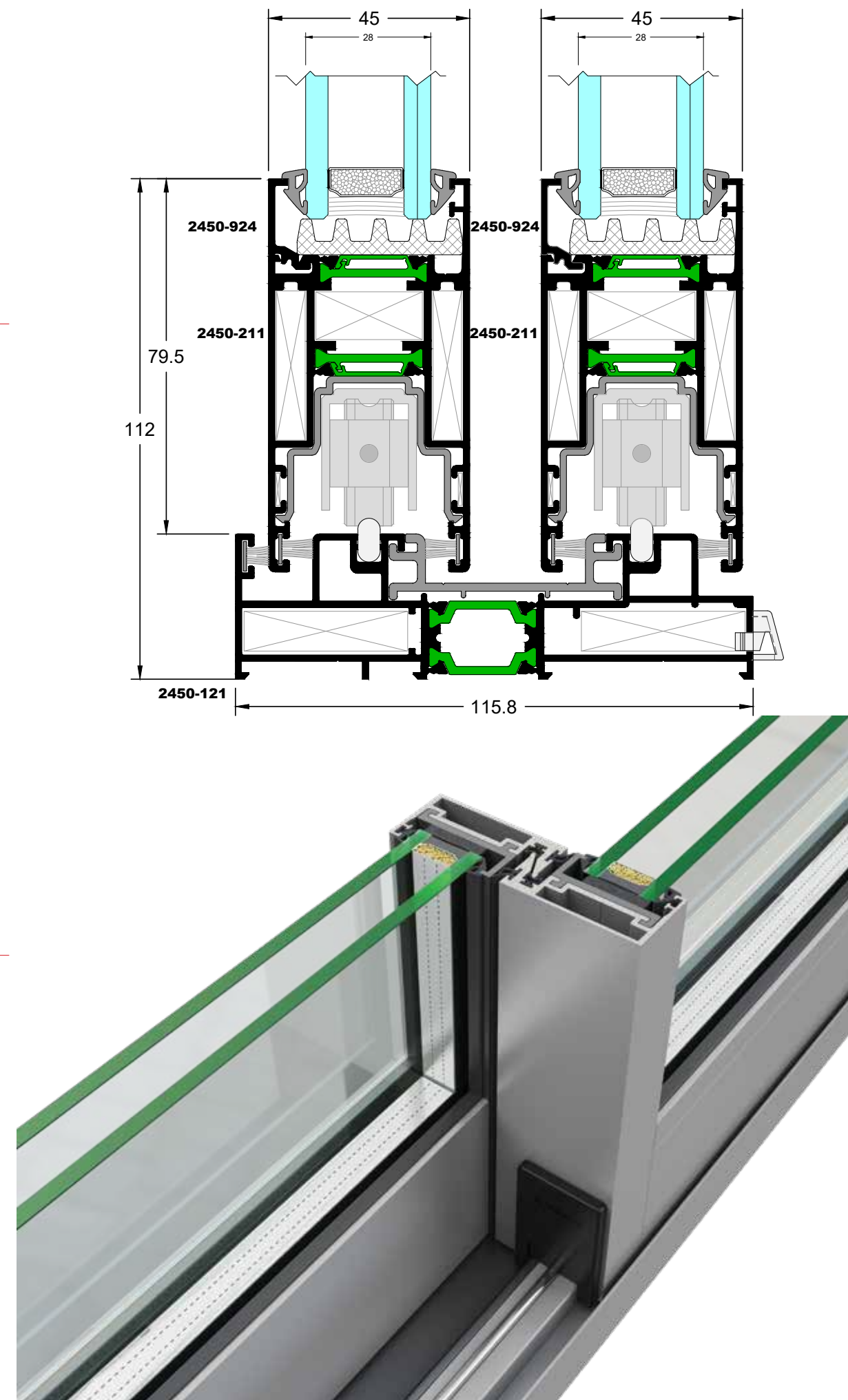
Minimal face widths.

### System Identity

The advanced system SL2450 offers all the functional benefits of a minimal lift and slide system with impressive performance. The system combines up to date architectural aesthetics and exceptional functionality along with high durability. The design parameters on which the system has been constructed are architectural aesthetics, functionality combined with durability and unprecedented performance, while flexibility and ease in construction are important benefits for the modern professional. Its minimal architectural design is reflected on the 30 mm wide interlocking profile for greater visibility and natural light, while the low-level threshold offers extra comfort and easier access. In order to improve its performance, the SL2450 is equipped with 32 mm glass reinforced polyamides and EPDM gaskets that offer increased levels of thermal insulation and water tightness.

### Features & Benefits

- High level of thermal insulation due to the 32 mm glass reinforced polyamides
- Its minimal and straight lines combined with the 32.5 mm low threshold offer particularly fine constructions.
- Interlocking face width of only 30 mm maximizes transparency and natural light penetration.
- The advanced lift mechanism offers high functionality, ease of use and smooth sliding while the specially designed profile with the integrated handle reinforces robustness and increases the resistance to wind pressure.
- Possibility to implement different typologies, perfectly adapting to large scale constructions.
- Ideal for hotel units, offering the ability to implement extensive lifting-sliding solutions with fixed panel.



Rate of Insulation

**$U_w=1.59 \text{ W/m}^2\text{K}$**

Thermal conductivity coefficient has been calculated for the construction:

4500x2500 with  $U_g=1.1 \text{ W/m}^2\text{K}$

Glass type: 3+3 /16 (ARGON) / 5

## Technical data

### HARDWARE

SLIDING	•
LIFT & SLIDE	•

### INSULATION

POLYAMIDES mm	16-32
---------------	-------

### SYSTEM PROFILE DIMENSIONS

FRAME LIFT & SLIDE WIDTH mm	115
MIN. FRAME HEIGHT mm	32.5
MIN. FACE HEIGHT mm	112
MIN. WIDTH OF HOOK (MIDDLE SECTION):	30
GLASS THICKNESS mm	28

### CONSTRUCTION DIMENSIONS

SASH WIDTH mm	330-2000
SASH HEIGHT mm	1200-2700
MAX. SASH DIMENSIONS mm (WxH)	2000x2400 / 1600x2700
MAX. SASH WEIGHT Kg	200-250*

### CERTIFICATES/PERFORMANCES

OPERATING FORCES EN 13115	Class 1
AIR PERMEABILITY EN 12207	Class 4
WATER TIGHTNESS EN 12208	Class 3A
RESISTANCE TO WIND LOAD EN 12210	Class C4/B4
SOUND REDUCTION $R_w$ (C;Ctr) EN 717	40 (-2;-7)dB
THERMAL INSULATION $U_f$ ISO 10077-2	1.9-5.3 W/m <sup>2</sup> K

### Configurations

**Lift - sliding** 2Leaf sliding, 3Leaf sliding, 4Leaf double sliding, 6Leaf double sliding, 2Leaf sliding with insect screen, 2Leaf sliding with fixed, 2Leaf sliding with fixed and insect screen, 1Leaf sliding with fixed

**Lift - sliding pocket** 1Leaf-2Leaf sliding with glass, 1Leaf-2Leaf sliding pocket with glass-insect screening system, 1Leaf-2Leaf with glass- rolling shutters, 1Leaf-2Leaf with glass-insect screen-rolling shutters.





**ALUMINCO SL2450**



# SL2700

## Lift & Slide Thermal Insulating System for high-end structures

### System Identity

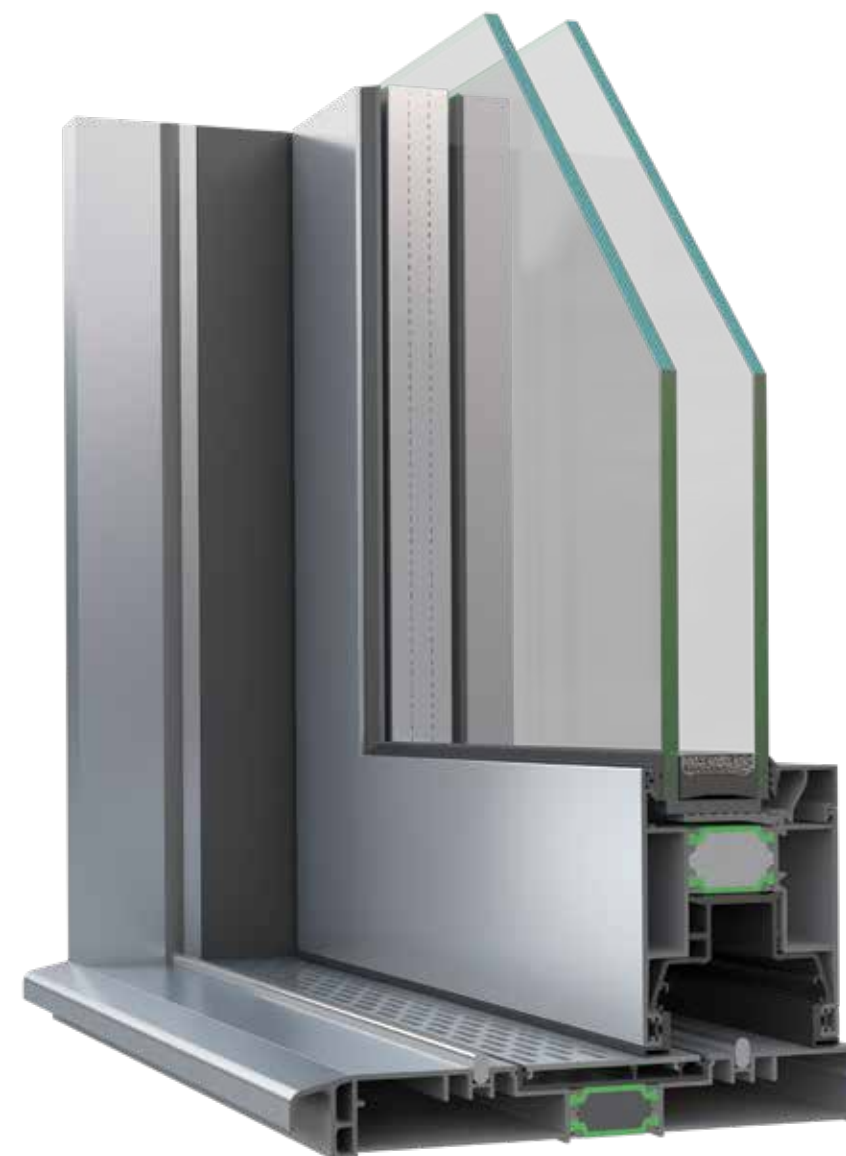
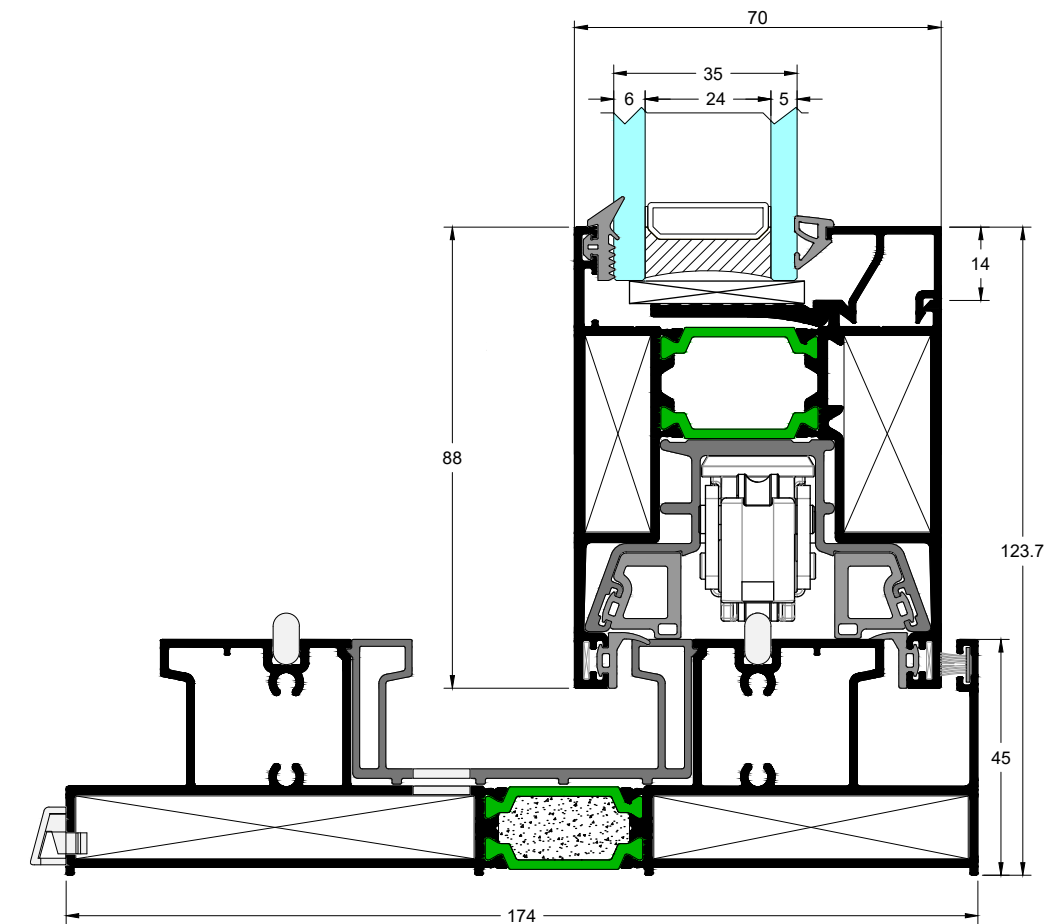
The lift-and-slide system SL2700 represents the new generation of ALUMINCO's high-end systems. Attractive and effective slim lines, excellent thermal insulation values and high-quality components create an exceptionally uplifting atmosphere.

The architectural aesthetics are depicted on the narrow interlocking face width which permits greater visibility and flow of light, while the ground level threshold offers high comfort and ease of access.

Exceeding conventional applications and fulfilling the need for wide spans, SL2700 offers more opportunities and options to the modern professional, therefore upgraded in one of the most efficient systems in its category.

### Features & Benefits

- Exceptional energy efficiency
- Impressive thermal insulation, water tightness and resistance to wind pressure.
- Minimal style and straight lines in combination with the low-level and flat threshold of 25 mm offer particularly elegant structures and facilitate the access
- Interlocking face width of only 43 mm for maximum transparency and light penetration
- The concealed lift-sliding mechanism offers smooth sliding and phenomenal functionality
- Perimetrical sealing with EPDM gaskets
- Multi-point lock with lift-and-slide for high burglar resistance.
- Wide variety of typologies and solutions with a great flexibility in construction
- Ideal for hotel units offering unique hotel solutions.



## Technical data

### HARDWARE

SLIDING

LIFT & SLIDE

### INSULATION

POLYAMIDES mm 30

### SYSTEM PROFILE DIMENSIONS

FRAME HEIGHT mm 25

FRAME WIDTH mm 174

SASH HEIGHT mm 88

SASH WIDTH mm 70

INTERLOCKING PROFILE WIDTH mm 43

SASH WEIGHT Kg up to 400

GLASS THICKNESS mm 22-52

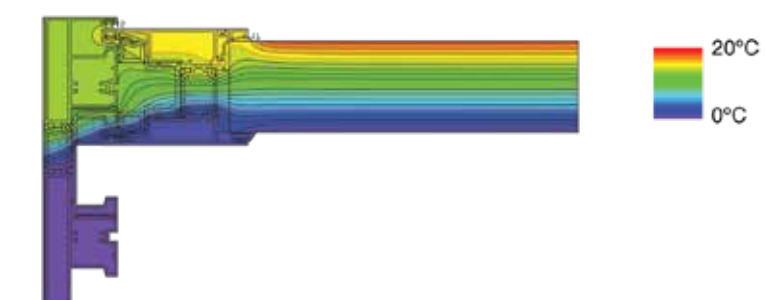
### CERTIFICATES/PERFORMANCES

AIR PERMEABILITY EN 12207 Class 4

WATER TIGHTNESS EN 12208 Class 9A

RESISTANCE TO WIND LOAD EN 12210 Class B4

THERMAL INSULATION  $U_f$  ISO 10077-2 from 1.7 W/m<sup>2</sup>K



Rate of insulation:

**$U_w=1.55$  W/m<sup>2</sup>K**

Thermal conductivity coefficient has calculated for the construction:

**4000x2400 with  $U_g=1.0$  W/m<sup>2</sup>K**

Glass type: 5/24 (ARGON) /6





**ALUMINCO SL2700**



# SL2900

## Sliding Thermal Insulating System

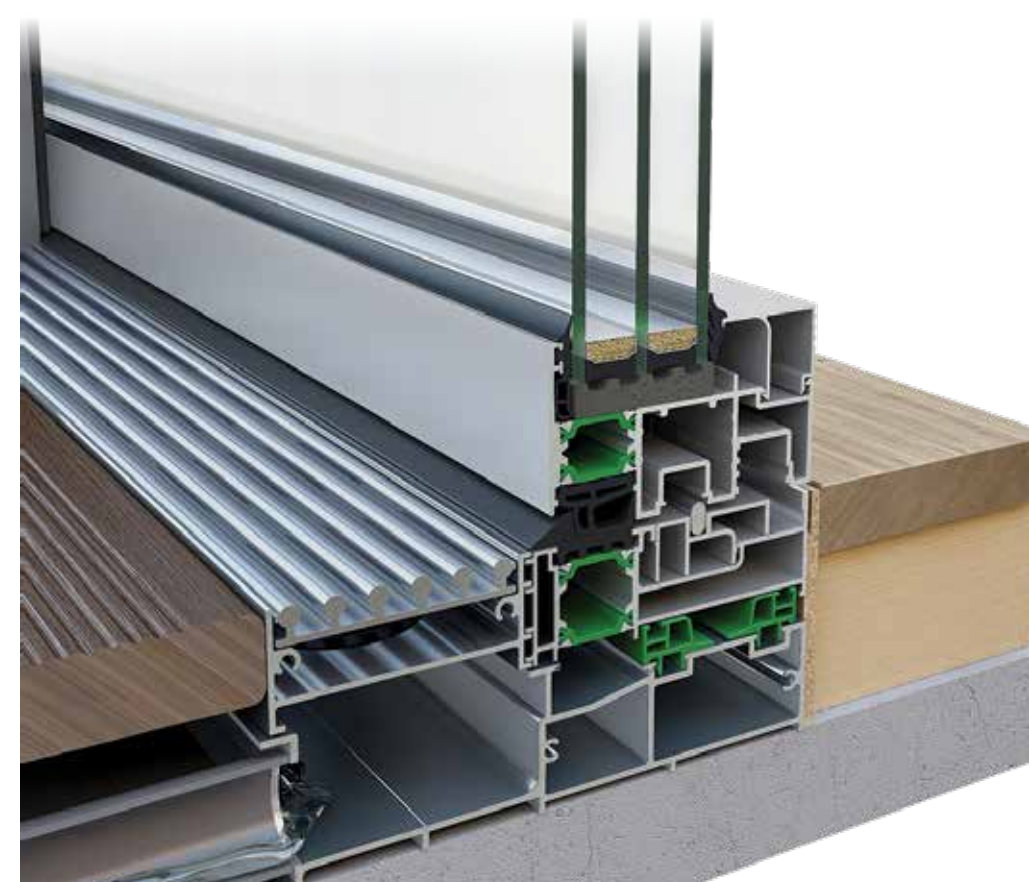
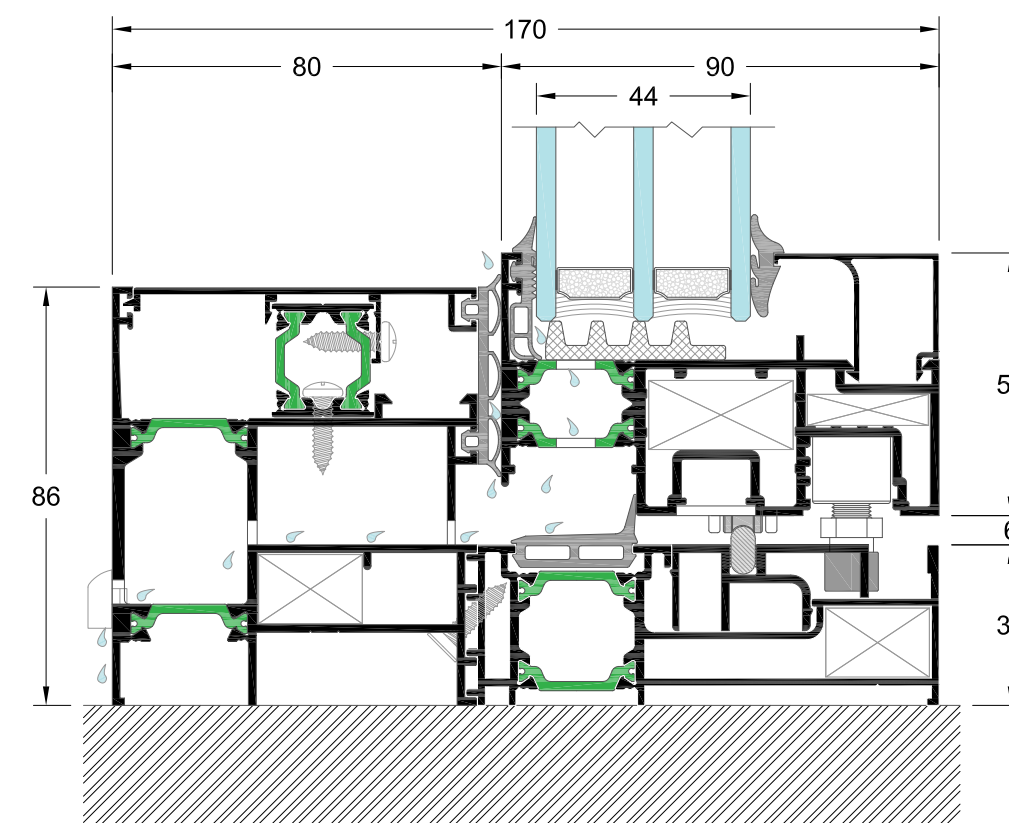
### Hyper performances.

#### System Identity

The Aluminco SL2900 is a top performing sliding system with innovative and unique features, offering elegant constructions and satisfying large-scale requirements. The art of minimal architectural design with first in class performance in terms of thermal insulation, air-and water-tightness, and the value-added SOFT CLOSE function, are some of the reference points that dominate and make the SL2900 unique. Aside from the design, the SL2900 is the only system that combines the ease of operation of lift-slide systems with the tight seal provided by tilt & slide elements. The latter is thanks to a continuous sealing system all around the perimeter, which saves large amounts of energy. Thanks to innovative SOFT CLOSE function the system's sash slows down during closing and guided reliably into the end position, minimising the risk of injury and of damage to the window elements.

#### Features & Benefits

- Top level thermal insulation thanks to the 24 mm reinforced polyamides.
- Exceptional performance in water and air tightness.
- Ability to use triple glazing for optimal sound reduction and maximum energy saving.
- Maximum transparency and light penetration thanks to face width of 64 mm and a concealed outer frame.
- The use of a concealed mechanism, the SOFT CLOSE damper, prevents damage caused by improper operation when opening or closing the slide sash and protects against any risk of injury.
- Suitable for covering large openings, with a maximum height of 2.5 m and width of 5 m, retaining their functionality and credibility.
- Three different track options offer ideal solutions depending on operational needs and performance levels.



## Technical data

### HARDWARE

SLIDING WITH DIVERSION

### INSULATION

POLYAMIDES mm 20-24

### SYSTEM PROFILE DIMENSIONS

MIN. RAIL WIDTH mm 170

MIN. FRAME HEIGHT mm 86

MIN. FACE HEIGHT mm 54

GLASS THICKNESS mm 44-74

### CONSTRUCTION DIMENSIONS

SASH WIDTH mm 680-2500

SASH HEIGHT mm 1200-2500

MAX. SASH DIMENSIONS mm (WxH) 2500x2500

MAX. SASH WEIGHT Kg 250

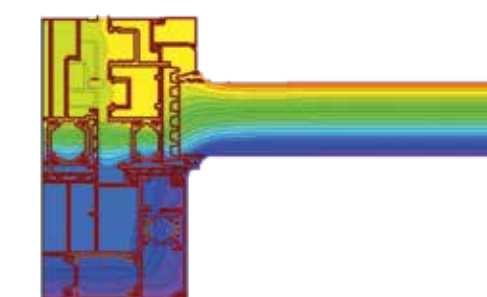
### PERFORMANCES

THERMAL INSULATION  $U_f$  ISO 10077-2 2.0-4.5 W/m<sup>2</sup>K

### Configurations

#### Sliding with fixed

1Leaf with fixed, 2Leaf with fixed



20°C  
0°C

Rate of Insulation

**$U_w=0.89$  W/m<sup>2</sup>K**

Thermal conductivity coefficient has been calculated for the construction: 5000x2500 with  $U_g=0.5$  W/m<sup>2</sup>K  
Glass type: 4/16 (ARGON) /4/16 (ARGON) /4  
High Level Threshold

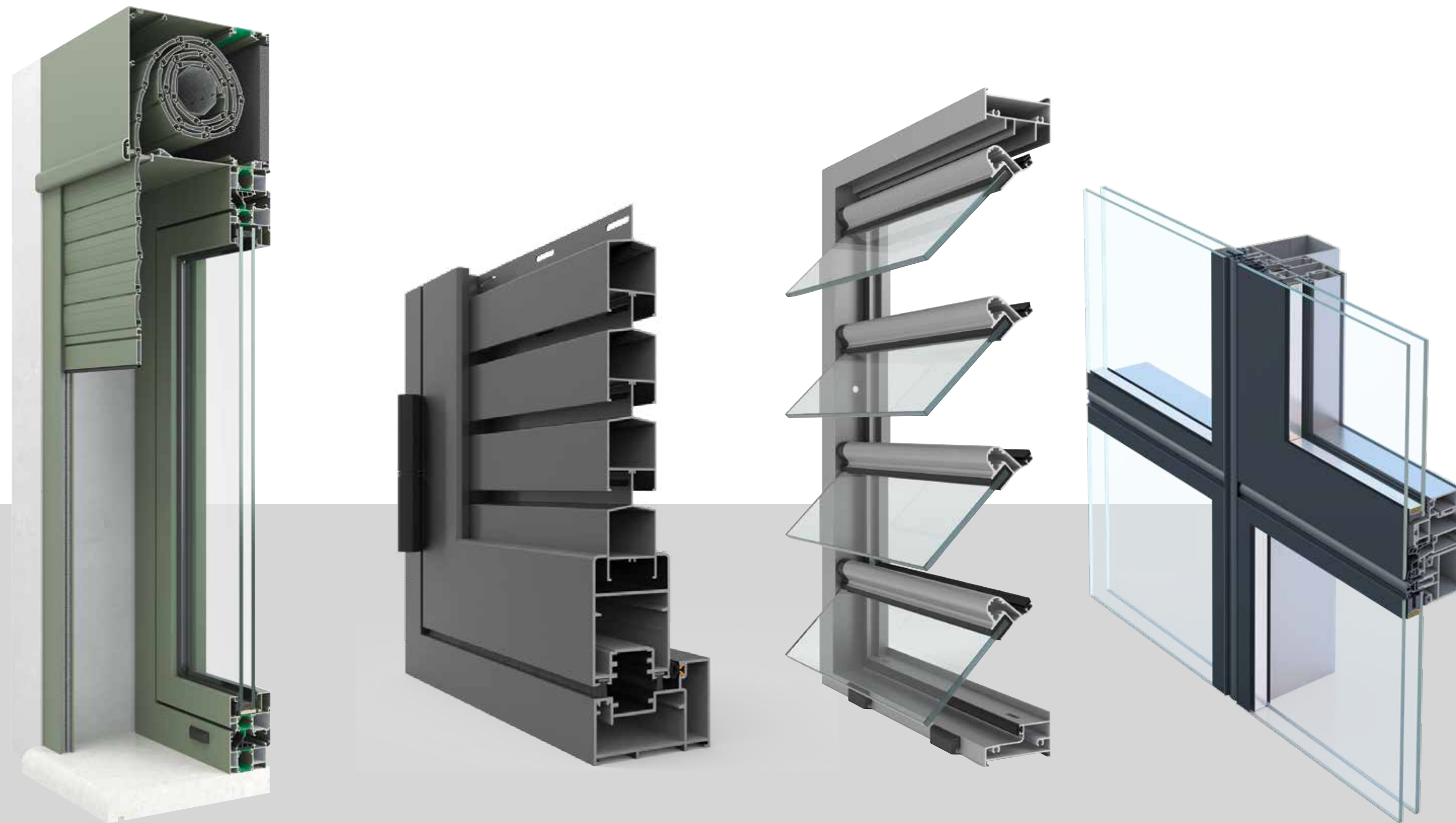




**ALUMINCO SL2900**



# SHUTTER, SHADOW & CW SYSTEMS





# SH700/750

## Rolling Shutters

High aesthetics and protection.

### System Identity

The insulating rolling shutter system SH750 combines aesthetics and functionality while exceptionally meeting the energy saving and security requirements.

World class insulating rolling shutter system SH750 offers excellent aesthetics and high functionality efficiency.

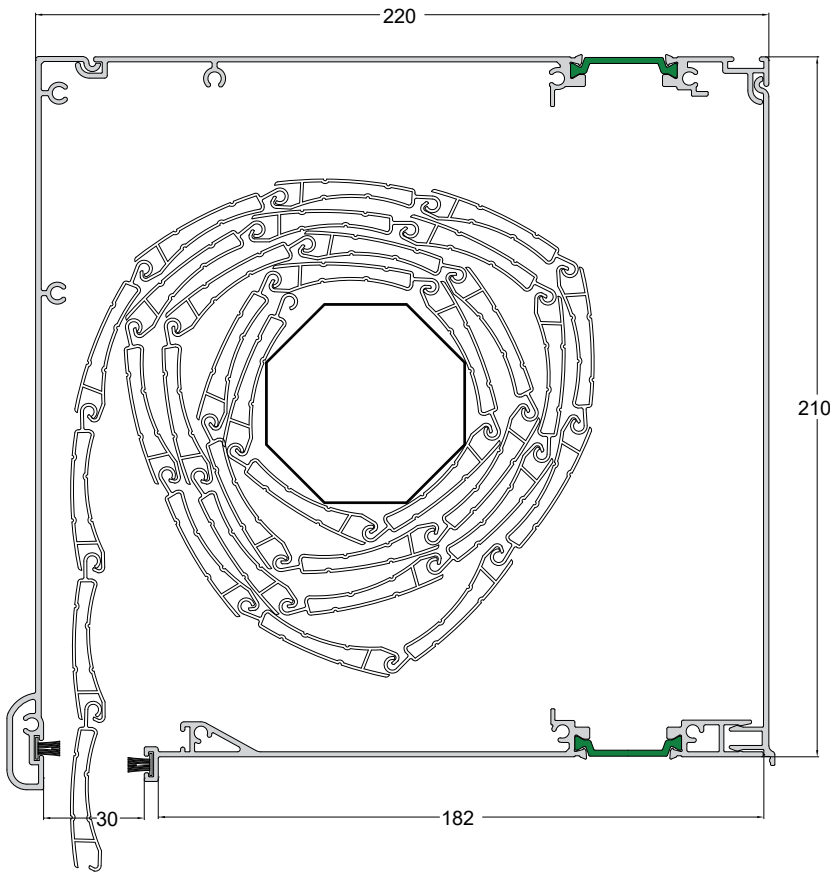
The system performs at the highest level of thermal insulation with  $U_{sb}=1.1$  W/m<sup>2</sup>K offering excellent quality and reliability.

Despite its minimal design, the system provides even greater safety features, ventilation and lighting satisfying the most demanding customers and covering all special needs.

In addition, the system can be integrated with all Aluminco window and door systems.

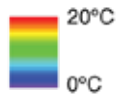
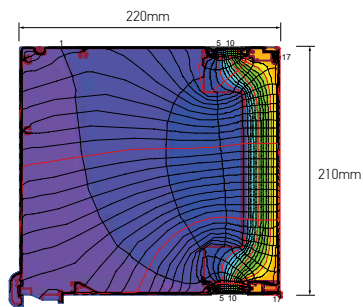
### Features & Benefits

- Full range of insulating and non-thermal boxes
- Full range of aluminium slats
- Full range of guides covering all aluminum systems
- Complete range of accessories and mechanisms of high quality
- Four insulating and non-thermal boxes in the same dimensions
- Simply rails and rails with extensions
- Aluminium slats stuffed with polyurethane and aluminum sheets covering structures from windows to garage doors



## Technical data

SERIES	SH750	SH700
INSULATION		
POLYAMIDES mm	32	N/A
BOX DIMENSIONS		
155x200 mm FLAT-CURVED (NON INSULATED - INSULATED)	•	N/A
185x220 mm FLAT (NON INSULATED - INSULATED)	•	N/A
185x185 mm FLAT-CURVED (NON INSULATED)	N/A	•
210x220 mm FLAT-CURVED (NON INSULATED - INSULATED)	•	N/A
250x250 mm FLAT (NON INSULATED - INSULATED)	•	N/A
RAIL		
FLAT-CURVED	22-26.5	22-26.5
FLAT-CURVED (WITH FIN)	80-200	80-200
SLAT		
FACE HEIGHT mm	39-55.7	39-55.7
CONSTRUCTION DIMENSIONS		
WIDTH mm	600-4500	600-4500
HEIGHT mm	600-4900	600-4900
CERTIFICATES/PERFORMANCES		
RESISTANCE TO WIND LOAD EN 13659:2004+A1:2008	Class 6 (1405x2400)	N/A
RESISTANCE TO WIND LOAD EN 13659:2004+A1:2008	Class 6 (2800x2500)	N/A
THERMAL INSULATION $U_{sb}$ EN ISO 10077-2	$U_{sb}=1.1$ W/m <sup>2</sup> K	N/A



Rate of Insulation

**$U_{sb}=1.1$  W/m<sup>2</sup>K**

Thermal conductivity coefficient has been calculated in "Thermo" box 220x210 mm





**ALUMINCO SH700/750**



# SH3200

**Shutter System** Passive solar shading suitable for residential buildings.

## System Identity

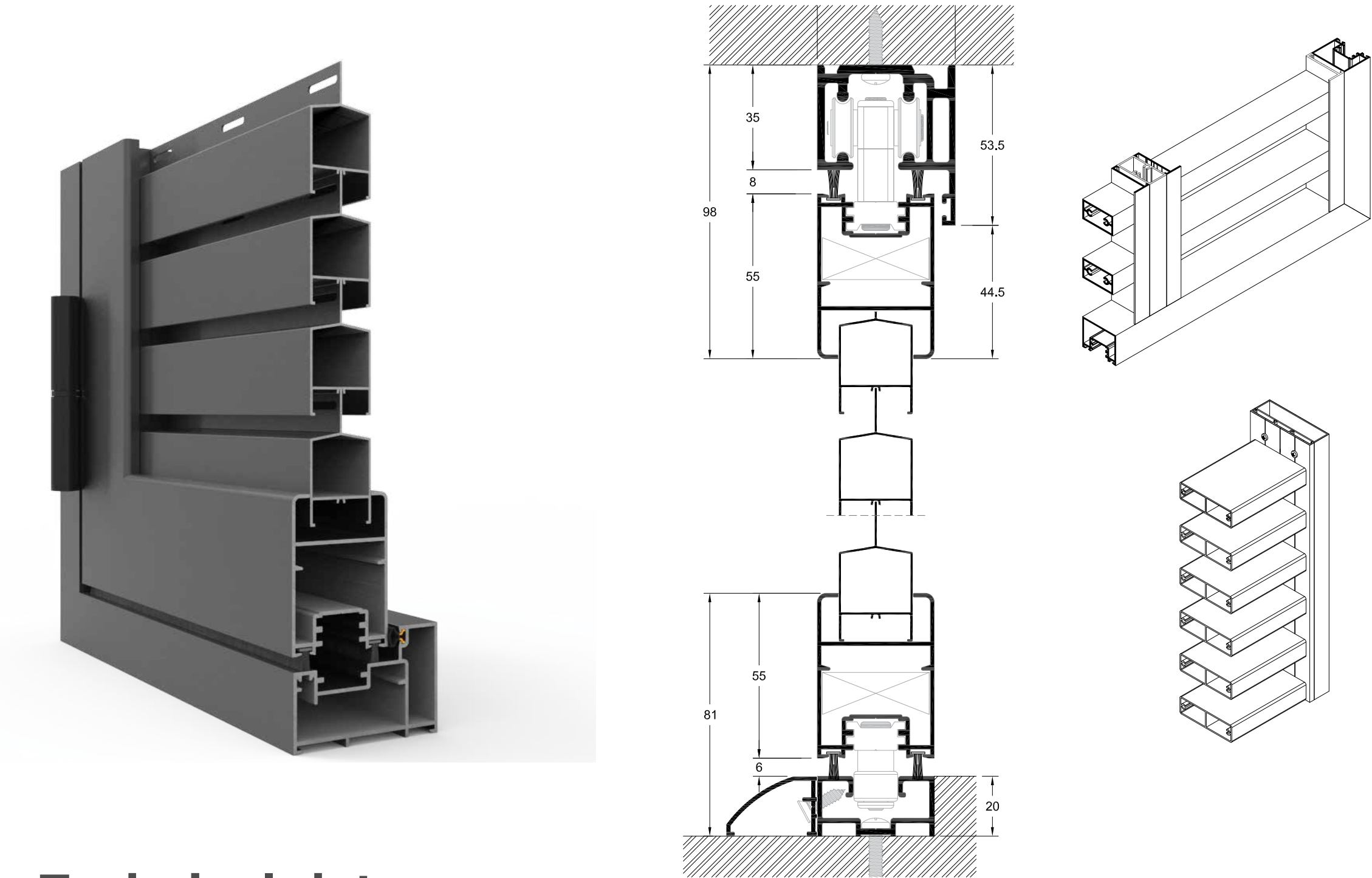
SH3200 is ALUMINCO’s proposal as far as high-quality and wide-range shutters are concerned. It offers shading and ventilation and is ideal for private houses as well as traditional or even listed buildings. The system allows a variety of constructional options, in all possible typologies, in a classic or modern design, matching with opening aluminium systems, working as an independent structure as well. Any fixed louver can adapt to it, including the 25mm movable louver system. The SH3200 is extremely friendly and practical to use, unique in its kind.

## Features & Benefits

- Constructions of opening, sliding and folding shutters systems by using the same sash.
- Use of special rollers for smooth scrolling and alignment of the sash for both folding and sliding system.
- Large variety of opening shutters in all possible typologies (fixed, single-ply, two-ply, four-leaf).
- Accepts fixed louvers, oval and movable louver.
- Movable shading leaves placed on the outer or inner side of the railings and over the railing, ideal for applications on balconies.

## Configurations

Opening, Sliding, Folding, Fixed



## Technical data

CONFIGURATIONS	OPENING	SLIDING	FOLDING	FIXED
SYSTEM PROFILE DIMENSIONS				
MIN. FRAME DEPTH mm	39	39	46	39
MIN. FACE HEIGHT mm	88	81	81	56.6
CONSTRUCTION DIMENSIONS				
SASH WIDTH mm	250-750	250-1300	300-750	230-1300
SASH HEIGHT mm	250-2200	250-2200	300-2200	250-2200
MAX. SASH DIMENSIONS mm (WxH)	650x2200	1100x2200	550x2200	1100x2200
MAX. SASH WEIGHT Kg	80	80	30	N/A





**ALUMINCO SH3200**



# SH3400

**Shadow System** Protection against solar radiation and controlling of the natural lighting of buildings.

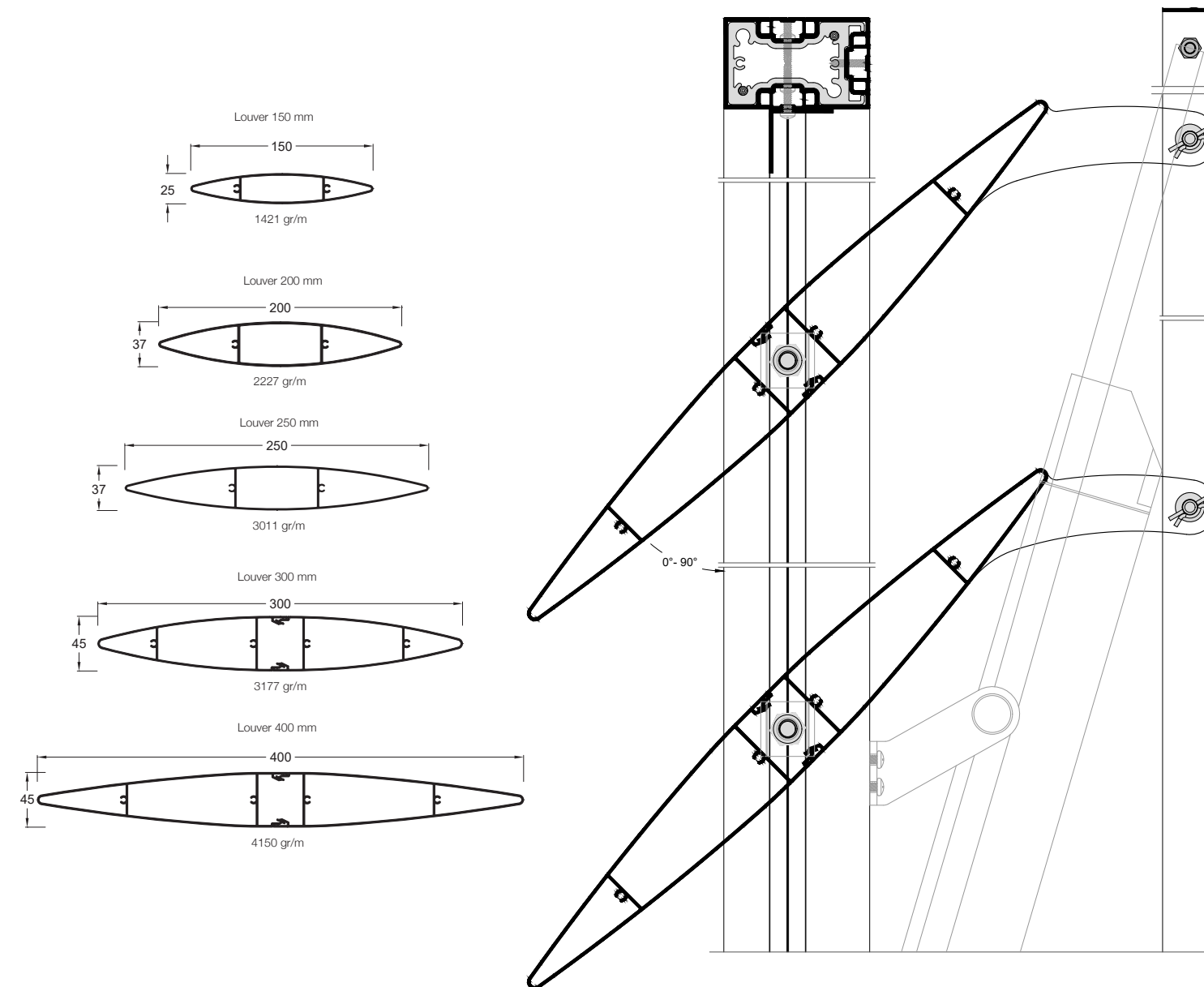
## System Identity

The specially designed blinds have the option to be placed either horizontally or vertically, movable or fixed, depending on construction needs and current architectural trends.

Its core characteristic feature and competitive advantage is that the gap between the frame and blind is just 10 mm, satisfying completely every requirement for minimization of solar radiation.

## Features & Benefits

- A big variety of different widths and louvers is available.
- Louvers with Fixed or Adjustable inclination.
- Constructions in Horizontal and Vertical layout.
- Ease of mounting, assembly and disassembly.
- Cooperates with the Curtain Wall System EW50, Standard & Structural, by Aluminco.



## Technical data

### CONFIGURATIONS

MOVABLE LOUVERS

FIXED LOUVERS

VERTICAL LOUVERS

HORIZONTAL LOUVERS

FIXED AND MOVABLE LOUVERS WITH CURTAIN WALL  
SYSTEM EW 50 STANDARD

FIXED AND MOVABLE LOUVERS WITH CURTAIN WALL  
SYSTEM EW 50 STRUCTURAL

### SYSTEM PROFILE DIMENSIONS

LOUVER'S FACE mm 37/45

LOUVER'S DEPTH mm 150-400

LOUVER WEIGHT Kgr/m 1.42-5.29

### LOUVERS' INCLINATION

FIXED LOUVERS: 0°-15°-30°-45°-60°

MOVABLE LOUVERS: MOTOR'S MOTION RANGE 0°-110°

### CONSTRUCTION DIMENSIONS

LOUVER'S SPAN mm 500-3500

### PERFORMANCE (CALCULATED)

LOUVER 200 mm RESISTANCE TO WIND LOAD 1 KN/m²  
UP TO THE LENGTH OF 2300 mm INCLINE 90°

LOUVER 200 mm RESISTANCE TO WIND LOAD 1 KN/m²  
UP TO THE LENGTH OF 2800 mm INCLINE 45°

LOUVER 300 mm RESISTANCE TO WIND LOAD 1 KN/m²  
UP TO THE LENGTH OF 2800 mm INCLINE 90°

LOUVER 300 mm RESISTANCE TO WIND LOAD 1 KN/m²  
UP TO THE LENGTH OF 3400 mm INCLINE 45°





**ALUMINCO SH3400**



# EW50

**Curtain Wall System** Affordable quality fully meeting all stability and safety requirements.

## System Identity

Curtain walls are constructions of high architectural interest mainly used in commercial buildings covering small or large surfaces. For this product category, Aluminco offers an integrated system where the very good thermal insulation, sound insulation and mechanical properties have secured the implementation of important and complex projects worldwide. The properties of the system characterize its uniqueness while offering excellent aesthetics and functionality since it is designed based on the highest architectural and engineering requirements. The EW 50 includes a wide range of solutions and works perfectly with all shading systems. The system is certified according to the strict specifications of the ISTEDIL Institute of Italy.

## Features & Benefits

The EW50 system is divided into three main types:

### Standard

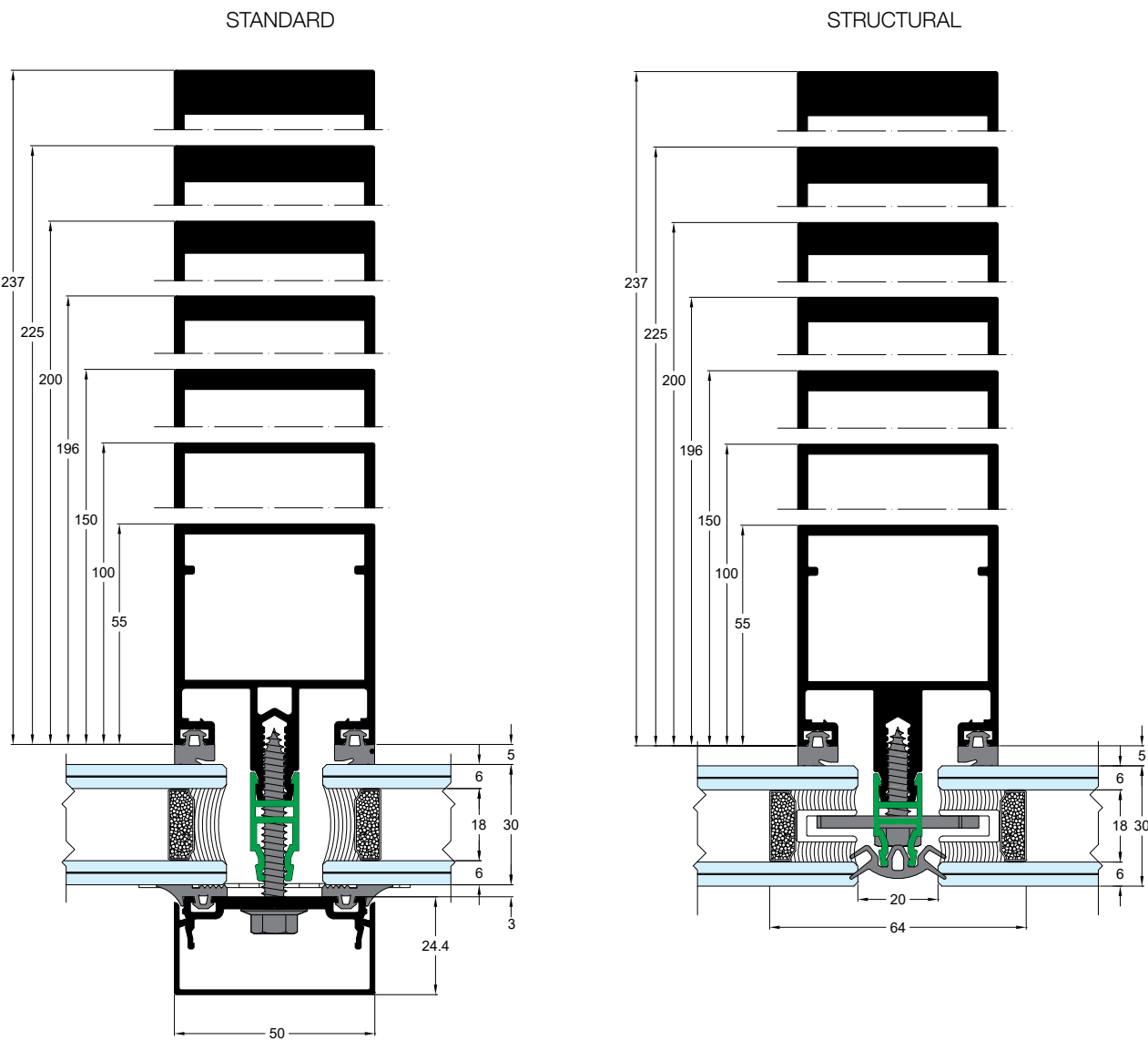
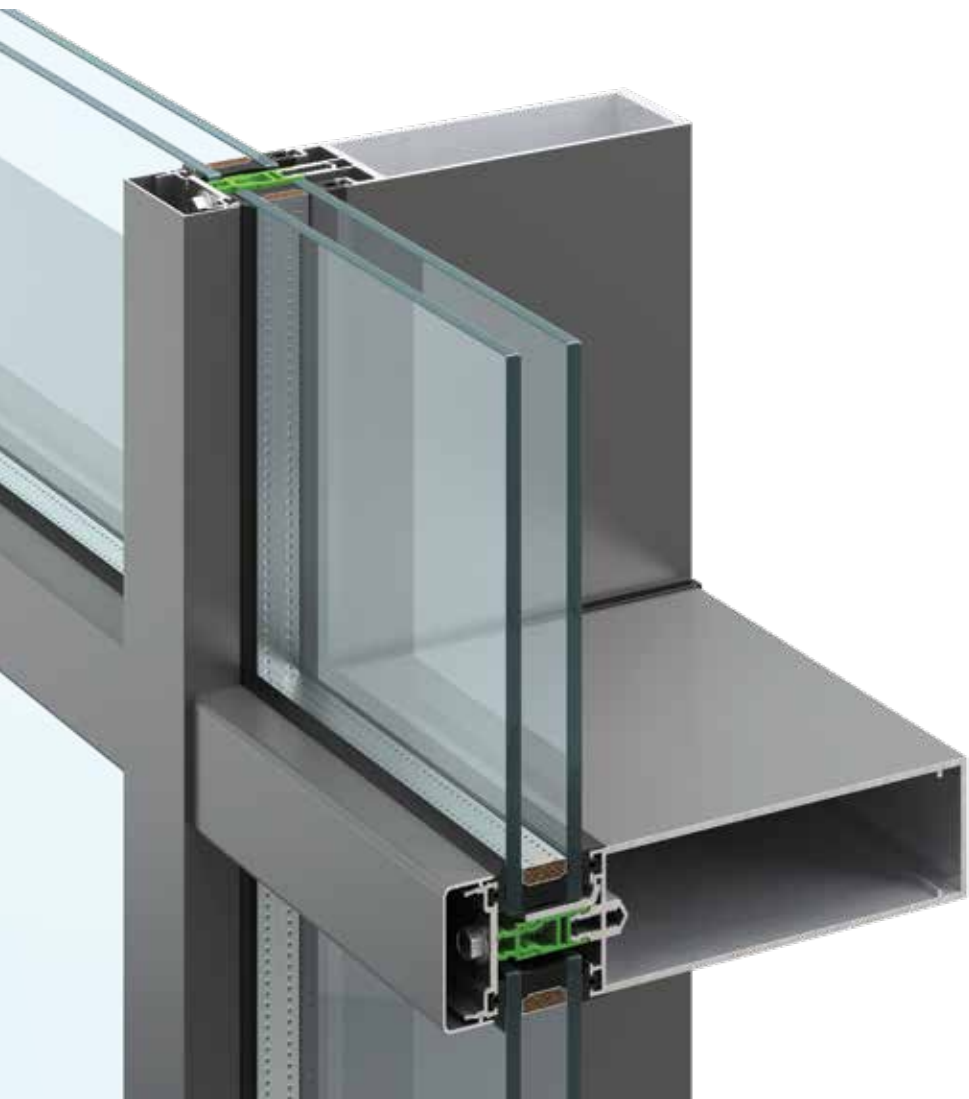
The timeless classic curtain wall solution of ALUMINCO for robust and modern design with visible grids and multiple solutions to decorative covers.

### Structural

The ultimate solution for facades of buildings cover, which hides the active participation of aluminum from its exterior.

### Linear

The harmonious combination of Standard & Structural types creates a linear effect on aesthetic architectural applications. High degree of functionality. Combination with doors and windows of the D75 / D90, W450 / W4750.



## Technical data

TYPE	STANDARD	STRUCTURAL	LINEAR
DIMENSIONS			
MULLION/TRANSOM WIDTH mm	50	50	50
MULLION/TRANSOM DEPTH mm	16-237	16-237	16-237
GLASS THICKNESS mm	6-52	30 or 32	30 or 32
CERTIFICATES/PERFORMANCES			
AIR PERMEABILITY EN 12207	Class A4		
WATER TIGHTNESS EN 12208	Class RE 1200		
RESISTANCE TO WIND LOAD UNI EN 12179	Design load: ±2000 Pa (203 Kg/m²) Increased load: ±3000 Pa (304 Kg/m²)		

## Configurations

**Standard and Structural** Fixed, Fixed with Top-hung windows, Fixed with parallel projected windows, Fixed with inward opening windows, Fixed with tilt and turn opening windows, Fixed with entrance door, Corner inside/outside

**Linear** Fixed, Corner inside/outside





SHUTTER, SHADOW & CW SYSTEMS

**ALUMINCO EW50**



# EW50 SP

## Curtain Wall System

Outstanding sound performance.



### System Identity

The EW50 SP is a thermally insulated curtain wall system for robust constructions of large glass surfaces, designed with reinforced profiles and new system components that meets the highest requirements in sound performance. This curtain wall system is standard type (mullion / transom) with horizontal and vertical cover. Mullions and transoms are made with the same profiles of 50 mm sightlines. EPDM gaskets and a special thermal and acoustic isolator are used to optimize the insulation of the system. It also offers the possibility to integrate triple glazing. This option increases the size of the glazing, giving the benefit to meet demanding projects in terms of thermal and acoustic performance. In addition, the possibility of incorporating opening frames can be achieved with Aluminco’s doors and windows series. The Aluminco EW50 SP is well equipped to deal with the requirements that enhance the living and working environment of a building.

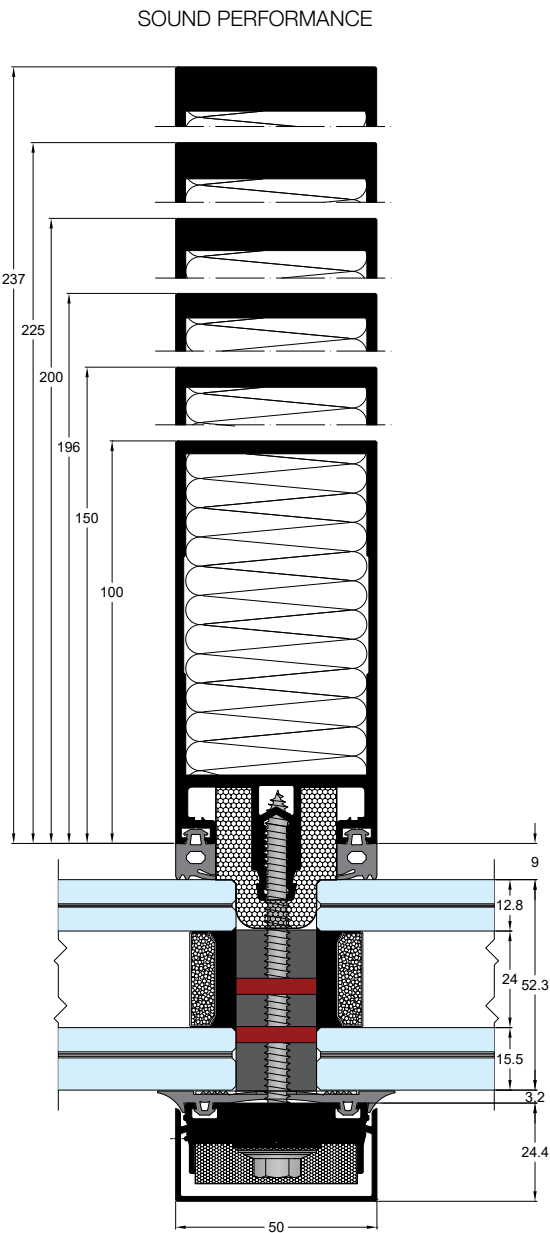
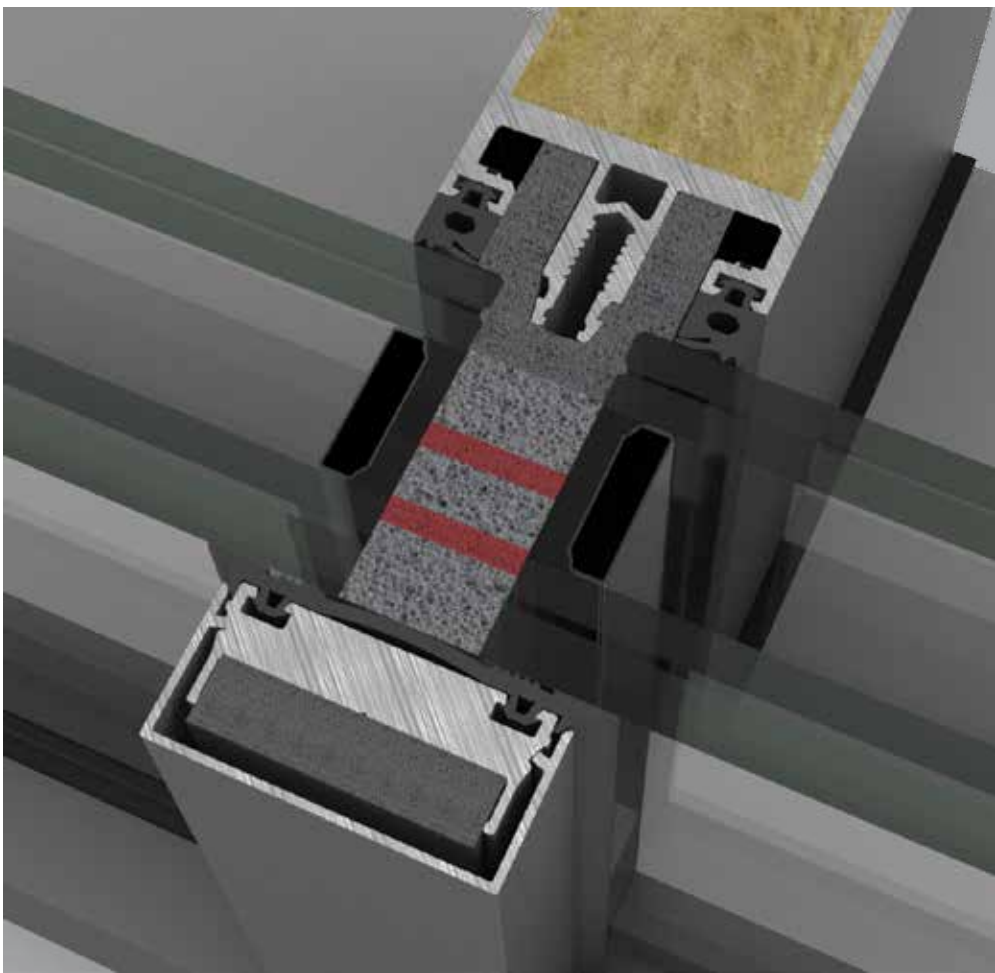
### Features & Benefits

- Outstanding sound insulation
- Optimum thermal insulation
- High degree of functionality
- Triple or double glazing solutions

### Configurations

#### Standard

Fixed, Corner inside/outside



## Technical data

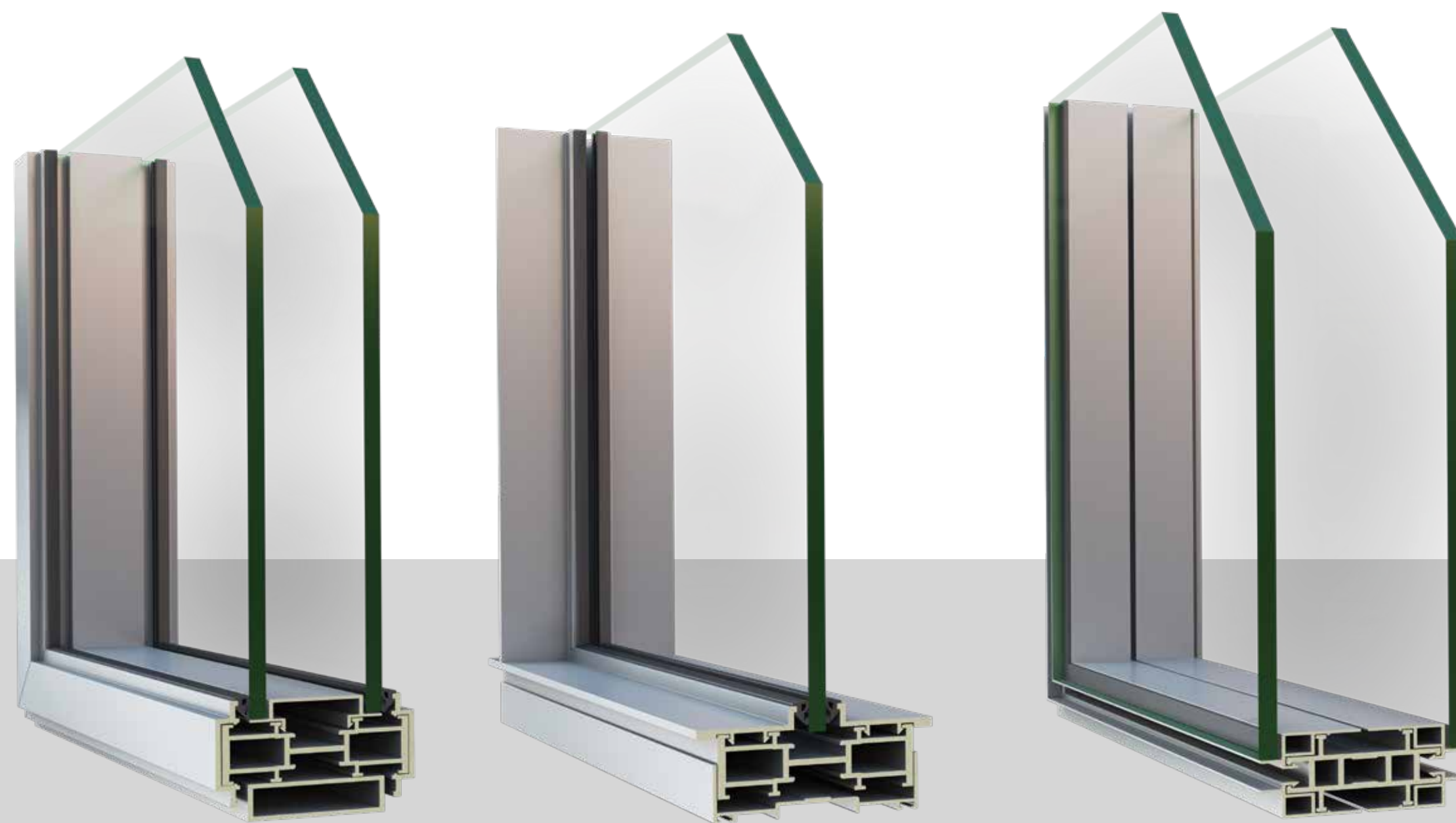
TECHNICAL CHARACTERISTICS			
EXTERIOR VISIBLE WIDTH	50 mm		
DEPTH MULLION	50-237 mm		
DEPTH TRANSOM	150 mm		
GLASS THICKNESS	12-64 mm		
MULLIONS MAX INERTIA	Ix=1881 cm <sup>4</sup>	Iy=83 cm <sup>4</sup>	
TRANSOMS MAX INERTIA	Ix=322 cm <sup>4</sup>	Iy=44 cm <sup>4</sup>	
CERTIFICATES/PERFORMANCES			
THERMAL INSULATION EN ISO 12412-2	1.64 W/m²K		
AIR PERMEABILITY EN 12152 & 12207	Class A4		
WATER TIGHTNESS EN 12208	Class RE1200		
RESISTANCE TO WIND LOAD EN 12210	Design load: ±2000 Pa (203 Kgr/m²)		
	Increased load: ±3000 Pa (304 Kgr/m²)		
SOUND REDUCTION RW EN 717	52 dB		







# INTERIOR PARTITIONS





# OS25

## Interior Partitions

Aesthetic outcome and functionality

### System Identity

The OS25 system gives a different point of view in the design of interior partitions, contributing to the creation of spaces with rich lighting and an unmistakably modern aesthetic. It offers extremely elegant constructions and greater transparency in its structural version, while the single- and double-glazing typologies are distinguished by their robustness and the possibility of creating a more industrial look.

The slim fittings of the new series follow the architectural trend for minimal visible aluminum, more transparency and enhancement of natural lighting, offering elegant proposals for creating modern offices and ideal working conditions that enhance the creativity and productivity of employees. At the same time, it meets the requirements of modern building infrastructures in terms of its functionality and performance.

### Features & Benefits

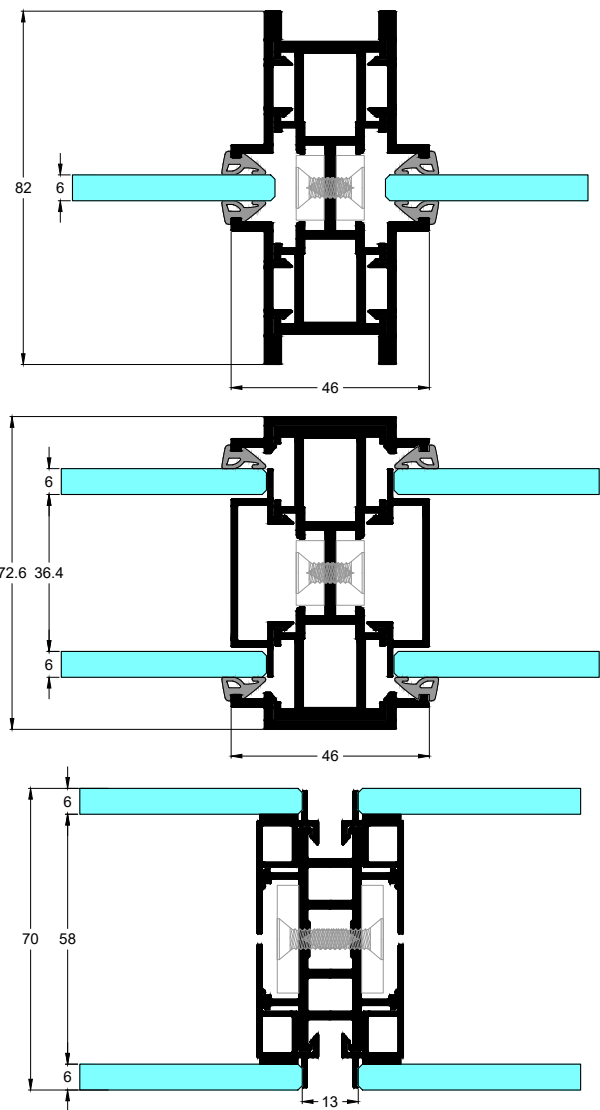
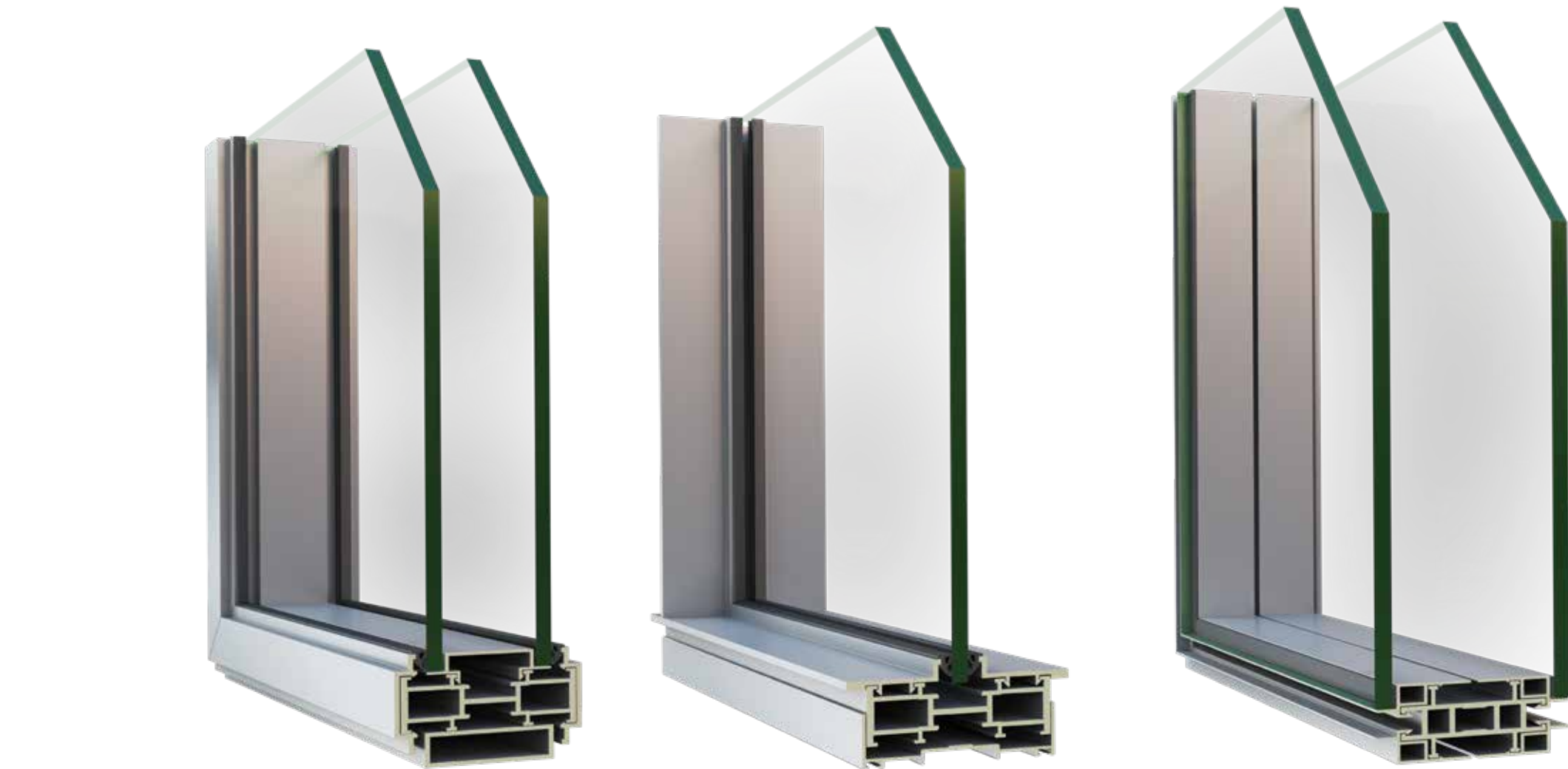
- Slim design
- Maximum transparency and light diffusion (structural version)
- Upgraded noise reduction
- Complete solutions for every need and desire

### Applications

- Offices and reception rooms
- Hotels, airports, restaurants
- Conference and exhibition spaces
- Interiors in residences

### Configurations

Types: Fixed, fixed with glass opening door, fixed with glass sliding door.



TECHNICAL CHARACTERISTICS	SINGLE GLASS	DOUBLE GLASS	STRUCTURAL
MINIMUM FACE HEIGHT mm	46	46	13
FRAME HEIGHT mm	26	26	31
FRAME WIDTH mm	68	68	52
SASH HEIGHT mm	14	14	14
SASH WIDTH mm	45	45	45
GLASS THICKNESS mm	6	6+6	6+6

PERFORMANCE			
SOUND REDUCTION Rw (C;Ctr) ISO 10140-2	38 (-2;-4) dB	39 (-2;-4) dB	40 (-3;-9) dB





INTERIOR PARTITIONS

INTERIOR PARTITIONS