

W&D Wall Cladding

Contemporary Cladding Solutions

Wall & Deco Cladding Systems make a difference at all levels. It is a lightweight system, which provides coverage of large surfaces, applied both to the exterior and interior of buildings, enhancing the overall aesthetics and upgrading the energy levels. Designed in minimal line and in numerous decorative variants, WDs provide a high degree of freedom in the design process of a space, applying perfectly well in modern buildings with a unique style.



W&D Deco Cladding

Contemporary Cladding Solutions

Wall&Deco offers numerous decoration and shading options, both for the exterior and interior of buildings. Designed for versatile use, they provide a variety of applications and aesthetic results. They are available in various sizes, offering flexibility for building applications, with a particular focus on residences, hotels, commercial buildings, and outdoor spaces. They are widely used in construction, renovation, and the enhancement of various spaces.





Highlights

- Designed to meet the new Architectural trend.
- Provides a variety of designs in typologies, applications, colors, textures.
- Provides the ability to install LED lighting strips, allowing for endless creative customization.
- Can be fabricated easily, fast assembly, and accurate installation in masonry.
- The positioning of the profiles in each typology is achieved with hidden connections (eg hidden installation screws, invisible support base).
- Allows complex technical applications, i.e. combinations with curtain walls, windows, entrance doors, etc.
- Can be applied to walls, ceilings, doors, interior partitions, garage doors, and entrance doors.
- Suitable for large surfaces of commercial buildings, offices, and modern residences.
- Corrosion resistance, thanks to the durability of aluminum and its surface treatments.

Technical Data

● Profile depth	→ 20-50 mm
● Visible profile view width	→ 20 / 30 / 40 / 200 mm
● Visible visual gap	→ 20 / 25 / 30 mm
● Maximum visible profile surface	→ 200 mm
● Exterior appearance - Designs	→ Five profile proposals and their combinations WD-2001 / WD-2020 / WD-2030 / WD-2040 / WD-2050
● Configurations	→ Horizontal / vertical installation of the profiles
	→ Combination between profiles
	→ Option for LED lighting integration

Performances

● Sound reduction Rw (C;Ctr) ISO 10140-2	→ 40 (-2;-6) dB
--	-----------------

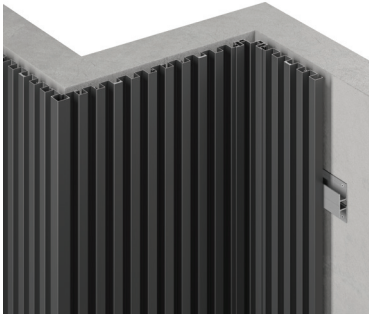


Technical Data

● Applications & uses for exterior & interior spaces	→ Building façade
	→ Shading louvers
	→ Gates & fencing
	→ Space dividers
● Specific Uses	→ Use as movable shading louvers
	→ Use of fixed louvers for fencing and shading
	→ Use of fixed louvers for space division and shading
	→ Wall-mounted installation for the exterior façade of residences
	→ Installation as an interior partition
	→ Floor-to-ceiling installation as an interior partition



Deco Cladding



Wall Cladding

