

ALUMINCO[®]

ALUMINIUM BUILDING SYSTEMS

WE ARE
A PART OF
TOMORROW

**WE
ARE
GLOBAL!**



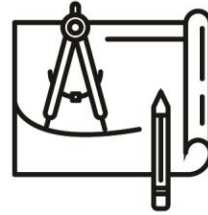
44

Years of History



60

Countries Presence



500

R&D Solutions



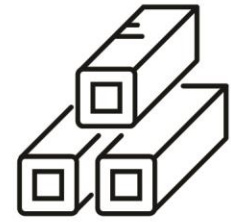
2500

POS



55%

exports

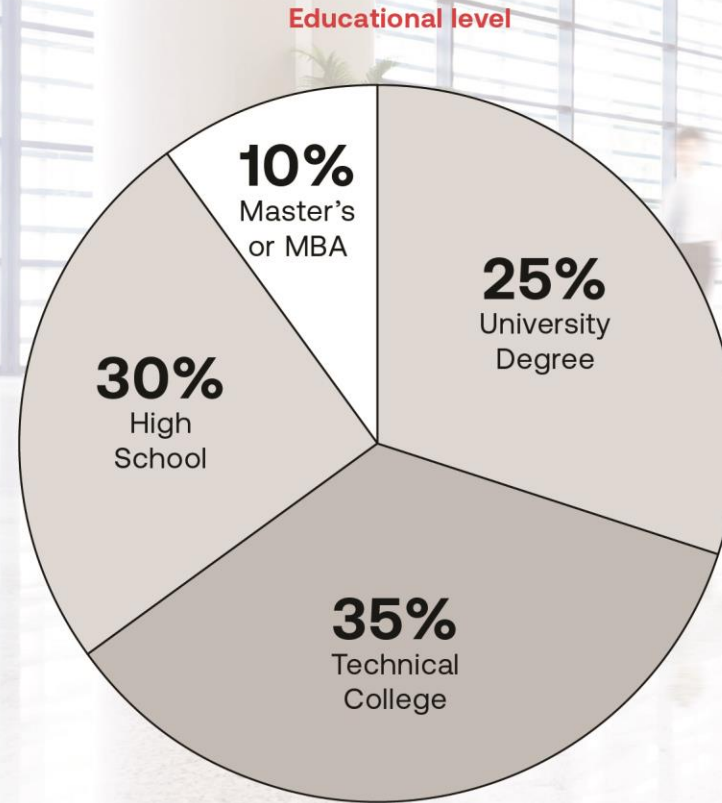
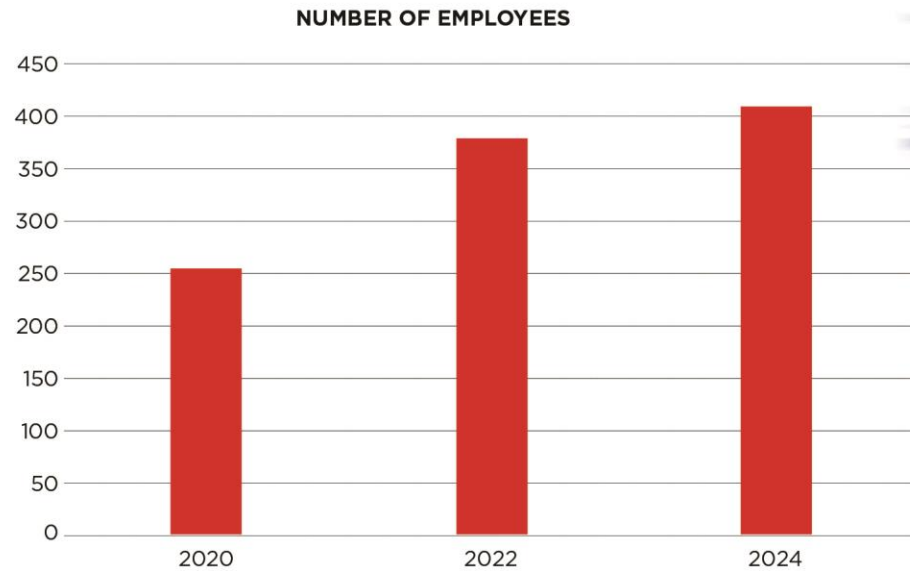


35K

tons of Aluminium



OUR PEOPLE OUR FAMILY!



BUILDING A SUSTAINABLE FUTURE!

Each of our products was designed not just to offer the best possible solution and maximize the value for our customers. **But also, to consider the local ecosystem and operate with respect for the future of the planet.** Backed by an Environmental Product Declaration (EPD), our product's raw materials, manufacture and transportation have been assessed by an independent third-party to confirm its sustainability credentials.

Programme	The International EPD System www.environdec.com
Programme operator	EPD International AB
EPD registration number	S-P-05550
Publication Date	2022-02-10
Valid until	2027-02-09
PCR	PCR 2019:14 "Construction products"
Geographical scope	Worldwide
CPC Code	41532 Bars, rods and profiles, of aluminium



INNOVATIVE HIGH QUALITY PRODUCTS!

SKYLINE MINIMAL SYSTEMS

Doors, Windows, Façades

ARCHITECTURAL SYSTEMS

Doors, Windows, Entrance Doors, Folding, Shading, Shutters, Partitions, Curtain Walls,

RAILING SYSTEMS

Glass Balustrades, Classic Line, Anodized Line, Fusion Line

OUTDOOR LIVING SYSTEMS

Wall Cladding, Windscreens, Pergolas, Canopies, Fencing, Panels,



SKYLINE



SLIDING DOORS



WINDOWS



FAÇADES



ENTRANCE DOORS



PARTITIONS



FOLDING



LOUVERS



GLASS BALUSTRADES



CLASSIC RAILINGS



WD CLADDING



PERGOLAS

ADVANCED SERVICES & TOOLS!

• Corporate website: www.aluminco.com

- Electronic periodic newsletters
- Product and corporate brochures



- Training seminars and technical workshops
- Demo assembly videos on YouTube



- MyAluminco B2B Platform, online ordering-configurator-costing-bidding



- Aluminco Selections Work Book



- Technical documentation
- Specification Product Data Sheets

- Engineering service for major projects



- Performance tests in our Testing Center
- Drawings in AutoCAD and BIM files

- Digital 3D printing and modeling



- Uw application for certified thermal calculation
- Integrated FP PRO software "All in one" and computational tools



RESEARCH & DEVELOPMENT

Research and Development

Our evolution and progress are an achievement coming from the inspiration of a group of people, the “heartbeat” of ALUMINCO, on whose inspiration and concept, we base our next steps and development. It is this very group of people who design, develop and test our systems before proceeding with the final validation with internationally accredited laboratories.

Technical Support and Project Engineering

When it comes to a larger project which requires expertise and extensive engineering, ALUMINCO has put in place a highly qualified group of engineers capable to carry out any study and to offer the needed professional support to architects and fabricators.



CUSTOMER SATISFACTION & QUALITY ASSURANCE ARE PARAMOUNT!

■ ISO 9001:2015

Quality Management System certified according to the international standard

■ ISO 14001:2015

Environmental Management System certified according to the international standard

■ ISO 50001:2018

Energy Management System certified according to the international standard

■ ISO 45001:2018

Occupational Health and Safety Management System certified according to the international standard

■ EN15088:2005

FPC - Factory Production Control System certified according to the international standard

■ EN1090-1:2009

FPC - Factory Production Control System certified according to the international standard

■ QUALICOAT SEASIDE CLASS

Certificate of Compliance for Coating of Aluminium Profiles.

■ QUALICOAT QUALIDECO

Certificate of Compliance for Decoration of coated Aluminium.

■ QUALANOD

Quality certification of the anodizing process.



ISO 9001:2015



ISO 14001:2015



ISO 45001:2018



ISO 50001:2018



EN 1090-1:2009



EN 15088:2005



TESTING CENTER CERTIFIED BY THE GERMAN INSTITUTE IFT ROSENHEIM!



As part of the development process, ALUMINCO's products undergo numerous tests that allow them to meet more stringent international standards. The ability to test new or existing systems in an in-house laboratory allows on the one hand the continuous and systematic control of the performance level of the systems and on the other hand the substantial support to partners for specific project tests.



EN 1026

Air permeability



EN 1027

Water tightness



EN 12211

Resistance to wind load



EN 12046-1

Operating forces



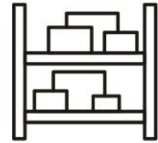
WE ARE **CAPABLE** OF ALMOST EVERYTHING!



3
aluminium
extrusion
lines



5
powder
coating
lines



6,000
cells
for profiles
and components



AWARDS & RECOGNITIONS!



ALUMINCO
SUBSIDIARIES



METAL
SKIN



InScreen
INSECT SCREEN SYSTEMS



**METAL
SKIN**

**Design
Meshes**

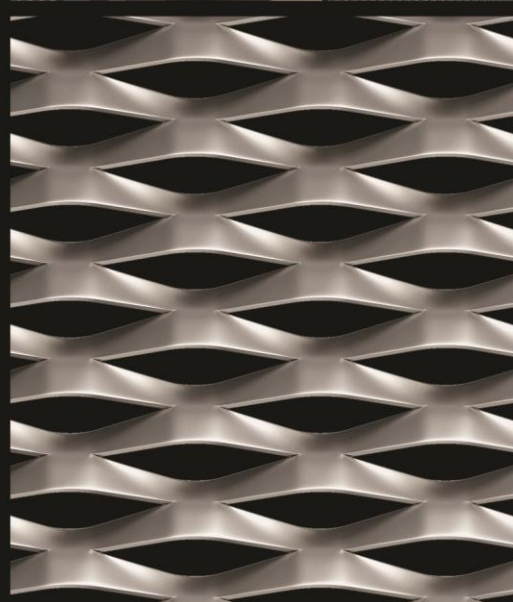
Architectural Design Meshes are polymorphic, light, cost-effective products, offering limitless possibilities for interior and exterior applications as well as for object design. Suitable for the renovation, expansion or modernization of existing buildings, they combine excellent functionality with high aesthetic appeal.

XPAND

PERFORATED

WAVE

HEXCEL





InScreen

INSECT SCREEN SYSTEMS

Jolly

Zero

Indoor

Klip 39
Vertical

Cubo
Electric

Omega 27

Omega 22

